

KÄRCHER

HIRE



PROFESSIONAL
CLEANING
EQUIPMENT
HIRE.

www.pressureclean.co.uk

WE ARE YOUR CLEANING EQUIPMENT PARTNER.

WHO WE ARE

Kärcher Hire are the leading specialist Cleaning Equipment Hire company in the UK. We have Distribution Hubs and Engineers throughout the UK enabling us to offer a truly local service to our customer. As part of the Kärcher Group we have the resources to fulfil any size contract, at short notice with the most up to date, robust, reliable range of cleaning equipment available.

WHAT WE BELIEVE

Kärcher Hire believes in working in “partnership” with our customers forming “long term” relationships. We believe in providing a great product backed by a great service from our experienced and friendly team. We have brought a flexible and convenient solution for all our customers, offering Short Term or Contract Hire’s.

HOW WE DO IT

Kärcher Hire can help expand your offering to your clients by supplying modern, clean machines anywhere in the UK. All machines are fully serviced after every hire. by our own experienced Engineers before every single Hire. Kärcher Hire will provide full Training for the cleaning operatives on every single Delivery ensuring the equipment is used properly and efficiently. We offer the flexibility to change machines should the contract requirements change.



CONTENTS

6	Dry Vacuum Cleaners
10	Wet and Dry Vacuum Cleaners
12	Scrubber Dryers
18	Sweeper and Vacuum Sweepers
22	Pressure Washers
26	Municipal Equipment
28	Escalator Cleaners
30	Steam Cleaners
32	Carpet and Upholster Cleaners
34	Sustainability Goals
38	Delivery, Training and Service

HIRE QUALITY
EQUIPMENT
FROM OUR
PREMIUM RANGE.



DRY VACUUM CLEANERS

Compact and low-noise: The small mobile Kärcher dry vacuum cleaners are specially designed to meet the requirements of professional customers. Kärcher offers optimum solutions in the field of dry vacuum cleaners, upright brush-type vacuum cleaners and battery-operated dry vacuum cleaners

CV 66/2 UPRIGHT BRUSH-TYPE VACUUM CLEANER



The CV 66/2 is a wide-brush vacuum cleaner designed for daily and deep cleaning of mid to large carpeted areas. With two counter-rotating roller brushes and a floating brush deck, the CV 66/2 is fast and thorough, and capable of cleaning up to 1000m² per hour. The machine has a 660mm working width and two powerful vacuum motors.

Working width	mm	600
Air flow rate	l/s	2 x 52
Vacuum	mbar / kPa	143 / 14.3
Container capacity	l	35
Rated input power	W	1650
Cable length	m	20
Sound pressure level EN 60335-2-69 uncertainty K = 1 dB(A)	dB(A)	73
Weight		8.4
Dimensions (L x W x H)	mm	1120 x 770 x 1270
Order no.		1.012-586.0

CV 60/2 RS STEP-ON VACUUM CLEANER



Compact, innovative step-on dry vacuum cleaner with a small turning circle. Ideal for carpets and hard surfaces. With contra-rotating roller brushes, side brushes, suction tube and HEPA filter (optional accessories). Convenient on-board battery charger.

Working width	mm	610
Air flow rate	l/s	34
Vacuum	mbar / kPa	117 / 11.7
Container capacity	l	17
Max. rated input power	W	1224
Voltage	V	36
Standard nominal width		ID 32
Cable length		-
Sound pressure level EN 60335-2-69 uncertainty K = 1 dB(A)	dB(A)	68
Brush motor power	W	373
Weight	kg	203
Dimensions (L x W x H)	mm	1120 x 622 x 1316
Order no.		1.011-028.0

BVL 5/1 BP BACKPACK VACUUM

In confined spaces, such as cinemas, buses, trains, aircraft or on stairs, the BVL 5/1 Bp is practically unbeatable. Battery-operated, extremely powerful and featuring an ergonomic and patented carrying frame for maximum comfort, it is also very easy to use as all functions are controlled directly via the control panel on the waist harness.



Air flow rate	l/s	46
Vacuum (battery mode)	mbar / kPa	207 / 20.7
Vacuum	mbar / kPa	-
Container capacity	l	5
Nominal power	W	650
Voltage	V	36
Standard nominal width		ID 35
Cable length		-
Sound pressure level EN 60335-2-69 uncertainty K = 1 dB(A)	dB(A)	57
Sound power level	dB(A)	-
Weight	kg	8.7
Dimensions (L x W x H)	mm	285 x 355 x 631
Order no.		1.394-225.0



WET AND DRY VACUUM CLEANERS

Indispensable: wet and dry vacuum cleaners cope with every kind of dirt. Whether dry, damp, or wet, the right machine from Kärcher will clean simply anything.

NT 65/2 AP AP CLASS



Two powerful turbines, patented filter system, semi-automatic filter cleaning and large container capacity permit long periods of uninterrupted use with constant suction power.

Air flow rate	l/s	2 × 74
Vacuum	mbar / kPa	254 / 25.4
Container capacity	l	65
Max. rated input power	W	max. 2760
Voltage	V	220-240
Standard nominal width		ID 40
Cable length	m	10
Sound pressure level EN 60335-2-69 uncertainty K = 1 dB(A)	dB(A)	73
Weight	kg	20
Dimensions (L × W × H)	mm	600 × 480 × 920
Order no.		1.667-297.0

NT 65/2 TACT2 TACT CLASS



The Tact² machines have a wealth of standard features for picking up large quantities of fine dust as well as coarse dirt: the unique Tact² is designed for long periods of uninterrupted use with constant high suction power. It comes with a complete anti-static package and 4 m suction hose. Designed for cleaning tasks otherwise reserved for larger and heavier vacuum cleaners.

Air flow rate	l/s	2 × 74
Vacuum	mbar / kPa	254 / 25.4
Container capacity	l	65
Max. rated input power	W	max. 2760
Voltage	V	220-240
Standard nominal width		ID 40
Cable length	m	10
Sound pressure level EN 60335-2-69 uncertainty K = 1 dB(A)	dB(A)	73
Weight	kg	24.5
Dimensions (L × W × H)	mm	575 × 490 × 880
Order no.		1.667-286.0

NT 27/1 ME STANDARD CLASS



Robust, affordable, versatile: These standard high-performance entry-level wet and dry vacuum cleaners easily pick up dirt and water, are mobile and ideal for cleaning small to medium-sized areas.

Air flow rate	l/s	67
Vacuum	mbar / kPa	200 / 20
Container capacity	l	27
Max. rated input power	W	max. 1380
Voltage	V	220-240
Standard nominal width		ID 35
Cable length	m	7.5
Sound pressure level EN 60335-2-69 uncertainty K = 1 dB(A)	dB(A)	72
Weight	kg	8.2
Dimensions (L × W × H)	mm	420 × 420 × 540
Order no.		1.428-112.0

NT 70/2 STANDARD CLASS



Kärcher quality at an affordable SSP: the NT 70 range offers powerful vacuum cleaners with up to three motors. With their high suction power, these vacuum cleaners effortlessly pick up liquids and coarse dirt.

Air flow rate	l/s	2 × 74
Vacuum	mbar / kPa	254 / 25.4
Container capacity	l	70
Max. rated input power	W	2400
Voltage	V	220-240
Standard nominal width		ID 40
Cable length	m	10
Sound pressure level EN 60335-2-69 uncertainty K = 1 dB(A)	dB(A)	75
Weight	kg	24.9
Dimensions (L × W × H)	mm	510 × 740 × 1010
Order no.		1.667-277.0



NT 22/1 AP BP PACK L BATTERY-POWERED

Compact, light and versatile: Thanks to its powerful Kärcher Battery Power battery, our NT 22/1 Ap Bp battery-powered wet and dry vacuum cleaner also impresses in places without an external power supply for demanding wet and dry applications. The Kärcher Battery Power+ battery, which is protected from dirt and liquids by a flap, ensures high suction power and a long runtime of the vacuum cleaner.



Current type	V	36 – 36
Battery platform		36 V battery platform
Container capacity	l	22
Container material		Plastic
Voltage	V	36
Standard nominal width		DN 35
Battery type		Removable lithium-ion battery
Capacity		7.5
Performance per battery charge	Ah	approx. 150 (7.5 Ah)
Runtime per battery charging	m ²	max. 31 (7.5 Ah)
Battery charging time with fast charger 80%/100%	min	58 / 81
Power supply for battery charger	V / Hz	100 – 240 / 50 – 60
Weight	kg	8.6
Dimensions (L × W × H)	mm	401 × 372 × 499
Order no.		1.528-126.0

NT 30/1 TACT TE H 110/240V NT 40/1 TACT TE M 110/240V SAFETY VACUUM CLEANERS

With dust class M safety vacuum cleaners, you will be fully protected against inhalable fine dust. The fully-automatic sensor control system in our new Tact appliances guarantees optimum filter cleaning and high suction power at all times. The vacuum cleaners also have electronic volume flow monitoring and a complete antistatic system.



**NT 30/1 Tact Te H 25A fuse
NT 30/1 Tact Te H**

**NT 40/1 Tact Te M 25A fuse
NT 40/1 Tact Te M**

Air flow rate	l/s	71 74	71 74
Vacuum	mbar / kPa	190 / 19 254 / 25.4	190 / 19 237 / 23.7
Container capacity	l	30	40
Max. rated input power	W	1100 1380	1100 1380
Voltage	V	110–110 220–240	110–110 220–240
Standard nominal width		ID 35	ID 35
Rubber power cable length	m	7.5	7.5
Sound pressure level EN 60335-2-69 uncertainty K = 1 dB(A)	dB(A)	69	67 68
Weight	kg	15 14.4	15.4 15.1
Dimensions (L × W × H)	mm	560 × 370 × 580	560 × 370 × 655
Order no.		1.148-249.0 -257.0	1.148-347.0 -355.0



SCRUBBER DRYERS

Our scrubber dryers are indispensable assets for professional cleaning companies. They are ideal for flawless cleaning and care of both hard and soft floors, including deep cleaning, maintenance care and polishing. Flawless on flat surfaces and up to the edges. And if there is a fundamental requirement for you, it is that floors are always perfectly cleaned and maintained – hygienically and with a shine.

BD 30/4 C BP PACK 4-LITRE CLASS



Until now, small areas and especially areas with a lot of furniture could generally only be thoroughly cleaned by hand. Thanks to the BD 30/4 C Bp Pack, this is no longer the case. Powered by a long-lasting lithium-ion battery, the manoeuvrable machine cleans hard and elastic floors, reliably vacuums the dirt water and leaves behind a clean, dry floor that is ready to walk on.

Brush working width	mm	280
Working width, vacuuming	mm	325
Theoretical area performance	m ² /h	900
Fresh/dirty water tank	l	4 / 4
Brush contact pressure	g/cm ² / kg	20 / 10
Brush speed	rpm	150
Input voltage/frequency	V / ah	36.5 / 5.2
Rated input power	W	max. 240
Weight	kg	21.1
Dimensions (L × W × H)	mm	555 × 375 × 1050
Order no.		1.783-233.0

BR 40/10 C 10-LITRE CLASS



The BR 40/10 C Adv is a cost-effective all-rounder. It scrubs floors like a single disc machine, picks up water like a wet suction device and polishes like a high-speed machine.

Brush working width	mm	400
Working width, vacuuming	mm	400
Theoretical area performance	m ² /h	400
Fresh/dirty water tank	l	10 / 10
Brush contact pressure	g/cm ² / kg	100-200 / 20-30
Brush speed	rpm	1100
Mains voltage	V	220-240
Frequency	Hz	50
Rated input power	W	2300
Weight	kg	30
Dimensions (L × W × H)	mm	520 × 470 × 380
Order no.		1.783-311.0

BR 35/12 C BP PACK 12-LITRE CLASS



Manoeuvrable scrubber dryer with extra-light, quick-charging and long-lasting high-performance battery. The rotatable roller brush head provides a new ride experience and the utmost efficiency.

Brush working width	mm	350
Working width, vacuuming	mm	450
Theoretical area performance	m ² /h	1400
Fresh/dirty water tank	l	12 / 12
Brush contact pressure	g/cm ² / kg	80-150 / 6-12
Brush speed	rpm	700-1500
Voltage, battery	V / Ah	25.2 / 21
Voltage, charger	V / Hz	220-240 / 50-60
Rated input power	W	500
Weight	kg	35
Dimensions (L × W × H)	mm	930 × 420 × 1100
Order no.		1.783-471.0

BD 38/12 C BP PACK 12-LITRE CLASS



Very compact scrubber dryer with disc engineering and extremely long-lasting, extra-light lithium-ion battery. The perfect solution for smaller areas.

Brush working width	mm	380
Working width, vacuuming	mm	480
Theoretical area performance	m ² /h	1520
Fresh/dirty water tank	l	12 / 12
Brush contact pressure	g/cm ² / kg	25-30 / 16-20
Brush speed	rpm	180
Voltage, battery	V / Ah	25.2 / 21
Voltage, charger	V / Hz	220-240 / 50-60
Rated input power	W	500
Weight	kg	36
Dimensions (L × W × H)	mm	940 × 500 × 1100
Order no.		1.783-433.0





BR 45/11 C BP PACK 22 TO 35-LITRE CLASS



Our BR 45/22 C scrubber dryer is ideal for cleaning smaller surfaces. The working width of 450 mm is the perfect size, the long-life lithium-ion batteries allow working for long periods without interruption, and the machine's rotatable roller head follows the direction that the operator drives in. Above all, it is very light, compact and extremely agile.



Brush working width	mm	450
Working width, vacuuming	mm	500
Theoretical area performance	m ² /h	1800
Fresh/dirty water tank	l	22 / 22
Brush contact pressure	g/cm ²	100-150
Brush speed	rpm	750-1050
Voltage, battery	V / Ah	25.2 / 42
Voltage, charger	V / Hz	220-240 / 50-60
Rated input power	W	up to 550
Weight	kg	51.1
Dimensions (L x W x H)	mm	970 x 530 x 1115
Order no.		1.783-460.0

B 40 40-LITRE CLASS

Why should a machine just be easy to operate, when it could be even easier? As well as safer and more convenient in many ways? With Kärcher Intelligent Key and the advanced EASY Operation concept, the B 40 C/W family offers a level of safety and protection for the operator, machine and work area that has never been seen before.



Nominal voltage	V	24
Working width, brushes	mm	550
Working width, vacuuming	mm	850
Theoretical area performance	m ² /h	3300
Fresh / dirty water tank volume	l	40 / 40
Brush contact pressure	g/cm ² / kg	140 / 24.9
Max. speed	rpm	1200
Max. water flow	l/min	2.6
Cleaning agent dosing unit*	%	0-3
Max. rated input power, total machine	W	1300
Rated input power, traction motor	W	130
Weight (without battery)	kg	88
Weight with 76 Ah, maintenance-free	kg	130
Weight with 105 Ah, maintenance-free	kg	164
Weight with 80 Ah, low-maintenance	kg	150
Dimensions (L x W x H)	mm	1249 x 620 x 1145
Order no.		0.300-404.0

B 60 60-LITRE CLASS

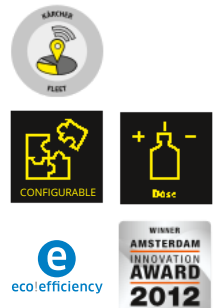
Efficient cleaning has a new name: B 60 W. The machine is not just economical, but also offers an impressively high area performance. For cleanliness made to measure, the equipment configuration, working width and squeegee shape can be selected according to the requirements profile. The KIK system guarantees especially simple and secure operation. The operator's setting options can be precisely defined in advance. In addition, ecoefficiency mode reduces the effective power of the motors only slightly, but extends the battery runtime by up to 30%.



Working width, brushes	mm	650
Working width, vacuuming	mm	940
Theoretical area performance	m ² /h	3900
Fresh / dirty water tank volume	l	60
Max. brush contact pressure	g/cm ² / kg	265 / 34.1
Max. speed	rpm	600-1300
Max. water flow	l/min	3.6
Cleaning agent dosing unit*	%	0-3
Voltage supply to machine	V/Hz / V/Ah	24 / -
Rated input power, total machine	W	2100
Rated input power, traction motor	W	300
Weight (without battery)	kg	109
Weight with 105 / 170 / 180 Ah	kg	185 / 232 / 231
Dimensions (L x W x H)	mm	1520 x 748 x 1147
Order no.		0.300-031.0

B 80 80-LITRE CLASS

The B 80 W scrubber drier presents itself at the highest level with numerous practical equipment features for cleaning large areas. This includes, for example, the KIK intelligent key system, automatic brush head and squeegee raising function, electric contact pressure adjustment, convenient adjustment of the water volume directly on the control panel, the effective parking brake, different battery sizes and working widths, as well as a large display. In short, the B 80 W is the convenient ideal solution for cleaning large industrial surfaces.



Working width, brushes	mm	750
Working width, vacuuming	mm	940
Theoretical area performance	m ² /h	4500
Fresh / dirty water tank volume	l	80 / 80
Max. brush contact pressure	g/cm ² / kg	374 / 51.5
Max. speed	rpm	600-1300
Max. water flow	l/min	7
Cleaning agent dosing unit*	%	0-3
Voltage supply to machine	V	24
Voltage supply to battery charger	V / Hz	100-240 / 50-60
Rated input power, total machine	W	2200
Rated input power, traction motor	W	350
Weight (without battery)	kg	129
Weight with 170 / 180 / 240 battery	kg	262 / 257 / 311
Dimensions (L x W x H)	mm	1550 x 809 x 1154
Order no.		0.300-033.0

B 90 R ADV DOSE BP PACK 90-LITRE CLASS

Highly compact ride-on scrubber drier for effortless use on medium and large areas. Available with disc brushes or roller brushes with sweeping mechanism.



Brush working width	mm	550-750
Working width, vacuuming	mm	850-940
Fresh/dirty water tank	l	90 / 90
Brush contact pressure	g/cm ² / kg	20-315 / 28-35
Battery	V / Ah	24 / 170
Battery charger	V / Hz	230 / 50-60
Weight	kg	275
Dimensions (L × W × H)	mm	1450 × 800 × 1200
Order no.		1.161-311.0

B 150 150-LITRE CLASS

The B 150 R is the perfect ride-on scrubber drier for medium-sized areas of 2,500 to 6,000 m². It is highly compact and provides good all-round visibility for cleaning interiors. The machine offers ultimate convenience too: Automatic lowering of the brush head and squeegee, large colour display, automatic adjustment of contact pressure and configurable cleaning modes. The KIK key system and the colour-coded control elements make operation particularly easy.



Working width, brushes	mm	900
Working width, vacuuming	mm	1060
Theoretical area performance	m ² /h	5400
Fresh / dirty water tank volume	l	150 / 150
Driving and cleaning speed	km/h	6
Max. brush contact pressure	g/cm ² / kg	505 / 89 / 34 / 96
Brush speed	rpm	600-1300 / 180
Waste container	l	9 / -
Max. water flow	l/min	9
Voltage supply to machine	V	36
Voltage supply to battery charger	V / Hz	230 / 50-60
Rated input power, total machine (ecoefficiency mode)	W	2800 (1680)
Weight (with battery)	kg	435-520
Dimensions without attachments (L × W × H)	mm	1790 × 910 × 1410
Order no.		0.300-132.0

B 250 R 250-LITRE CLASS

For cleaning hard surfaces in large premises, the B 250 R scrubber drier or combination machine is the right choice. The sturdy tubular steel frame meets even the toughest operational demands. Powerful batteries and large water tank ensure you can work for a long time without stopping. Single-button operation and coloured control elements make the machine especially easy to use.



Working width, brushes	mm	1200
Working width, vacuuming	mm	1420
Theoretical area performance	m ² /h	9600
Fresh/dirty water tank	l	250 / 250
Brush contact pressure (max.)	g/cm ² / kg	230 / 150
Brush speed	rpm	600-1200
Waste container	l	24
Max. water flow	l/min	8
Voltage supply to machine	V	36
Rated input power, total machine	W	5200
Weight (with battery)	kg	1270
Dimensions without attachments (L × W × H)	mm	1900 × 1260 × 1550
Order no.		2.480-003.0

B 300 RI 300-LITRE CLASS

With this combined scrubber drier/vacuum sweeper, you can perform two functions in one. It can overcome even the toughest challenges in a single operation, thereby practically halving the working time. It is also highly manoeuvrable and agile; it can withstand even tough applications easily and it excels on large areas with working widths of up to 1.65 metres (scrub vacuuming) or even 1.75 metres (sweeping). The powerful and robust combustion engines, powered either by LPG or diesel, combined with fresh and dirty water tank capacities of 300 litres each, ensure that you can work for very long periods without stopping.



Working width, brushes	mm	900
Working width, vacuuming	mm	1060
Theoretical area performance	m ² /h	5400
Fresh / dirty water tank volume	l	150 / 150
Driving and cleaning speed	km/h	6
Max. brush contact pressure	g/cm ² / kg	505 / 89 / 34 / 96
Brush speed	rpm	600-1300 / 180
Waste container	l	9 / -
Max. water flow	l/min	9
Voltage supply to machine	V	36
Voltage supply to battery charger	V / Hz	230 / 50-60
Rated input power, total machine (ecoefficiency mode)	W	2800 (1680)
Weight (with battery)	kg	435-520
Dimensions without attachments (L × W × H)	mm	1790 × 910 × 1410
Order no.		0.300-132.0

SWEEPERS AND VACUUM SWEEPERS

From compact manual sweepers to large industrial machines, Kärcher sweepers and vacuum sweepers impress with practical features and efficient sweeping and dust control technology. Versatile, for indoor and outdoor cleaning, they allow you to achieve perfect cleaning results every time. It is this impressive combination of sophisticated ergonomics, ease of use thanks to EASY Operation, simple handling and outstanding efficiency that makes our sweepers so unique.

KM 85/50 W BP ADV WALK-BEHIND SWEEPER



The compact and durable KM 85/50 W offers high area coverage and efficiency on medium size areas together with the highest level of comfort. With different equipment details such as a second side brush, reverse gear, etc.

Drive		DC motor
Power	W	912
Voltage	V	24
Max. area performance with 1 / 2 side brushes	m ² /h	3825 / 4725
Working width	mm	610
Working width with 1 or 2 brushes	mm	850 / 1050
Waste container	l	50
Climbing ability	%	15
Working speed	km/h	4.5
Filter area	m ²	2.1
Weight	kg	115
Dimensions (L x W x H)	mm	1355 x 910 x 1155
Order no.		1.351-115.0

KM 90/60 R BP ADV RIDE-ON SWEEPER



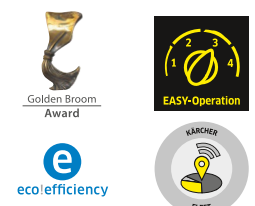
In addition to its powerful performance, easy handling, driving comfort and manoeuvrability, the KM 90/60 R Adv has many impressive features, including the patented and fully automatic Tact filter cleaning system. Thanks to a large tank volume, the petrol version enables long periods of use. It also has an automatic choke for an optimal start.



Drive		Battery
Power	kW	1.2
Max. area performance with 1 / 2 side brushes	m ² /h	5400 / 6900 7200 / 9200
Working width	mm	615
Working width with 1 or 2 brushes	mm	900 / 1150
Waste container	l	60
Climbing ability	%	12 8
Working speed	km/h	6 8
Weight	kg	355 270
Dimensions (L x W x H)	mm	1635 x 980 x 1260
Order no.		1.047-301.0

KM 105/110 R G + KSSB RIDE-ON SWEEPER

Ride-on vacuum sweeper with highly effective, patented and fully automatic filter cleaning, unique sweeping crescent side brush (optional), automatic wear adjustment of the main sweeper roller via Teach System and new sweeping concept. With this new sweeping concept, positioned between the rear wheels, the sweeping system is protected when driving over obstacles and enables corners to be swept out in only three passes.



Version		Petrol/LPG	Diesel	Bp Pack
Motor rating	kW	6.5 / 5.9	4.5	1.44
Driving speed	km/h	7	7	6
Turning circle	m	< 2	< 2	< 2
Sweeping width	mm	640	640	640
Sweeping width with 1 side brush	mm	1050	1050	1050
Sweeping width with 2 side brushes	mm	1400	1400	1400
Waste container capacity	l	110	110	110
Max. unloading height	m	1.55	1.55	1.55
Max. gradient	%	18 / 12	16	12
Area performance with 1 side brush	m ² /h	7350	7350	6300
Area performance with 2 side brushes	m ² /h	9800	9800	8400
Order no.		0.300-200.0 0.300-204.0	0.300-202.0	0.300-208.0



KM 125/130 RIDE-ON SWEEPER

With a working width of 125 cm, this sweeper is ideal for high area performance. Thanks to the hydraulic front-wheel drive, it can turn on the spot and effortlessly sweep out corners with the unique sweeping crescent brush. The main sweeper roller is located on the rear axle to prevent the sweeping system being grounded when driving over obstacles. Another new feature is the fully automatic and permanent filter cleaning system, which uses blasts of compressed air.



Motor rating	kW	2.5
Driving speed	km/h	8
Turning circle	m	<2.20
Sweeping width	mm	880
Sweeping width with 1 side brush	mm	1250
Sweeping width with 2 side brushes	mm	1700
Waste container capacity	l	130
Max. unloading height	m	1.55
Max. gradient	%	12
Area performance with 1 side brush	m²/h	10000
Area performance with 2 side brushes	m²/h	13600
Order no.		0.300-236.0

KM 130/300 RIDE-ON SWEEPER

This industrial sweeper is perfect for removing fine dust and construction waste from industrial areas. The battery-powered version ensures cleanliness even in noise-sensitive interior areas.



		KM 130/300 R LPG	KM 130/300 R D	KM 130/300 R D Classic
Drive		Four-stroke LPG engine / Kubota	4-stroke diesel engine / Yanmar	4-stroke diesel engine / Yanmar
Power	kW	17.5	15.8	15.8
Voltage	V	-	-	-
Max. area performance with 1 / 2 side brushes	m²/h	13000 / 15500	13000 / 15500	13000 / 15500
Working width	mm	1000	1000	1000
Working width with 1 or 2 brushes	mm	1300 / 1550	1300 / 1550	1300 / 1550
Waste container	l	300	300	300
Climbing ability	%	18	18	18
Working speed	km/h	10	10	10
Filter area	m²	5.5	5.5	7.8
Weight	kg	900	951	921
Dimensions (L x W x H)	mm	2150 x 1330 x 1430	2150 x 1330 x 1430	2150 x 1330 x 1430
Order no.		1.186-121.0	1.186-120.0	1.186-139.0

KM 150/500 RIDE-ON SWEEPER

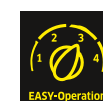
This durable industrial sweeper features a 150 cm working width and is ideal for use in the building materials and metal processing industry, in foundries and in other industries with high levels of dirt accumulation. The battery version is perfect for noise-sensitive interior areas.



		KM 150/500 R LPG	KM 150/500 R D	KM 150/500 R D Classic
		High working and transport speed Traction drive and sweeping system fully hydraulic Low-maintenance	High working and transport speed Traction drive and sweeping system fully hydraulic Low-maintenance	High working and transport speed Simple operation via control lever Pocket filter with large filter area
Drive		Four-stroke LPG engine / Kubota	4-stroke diesel engine / Yanmar	4-stroke diesel engine / Yanmar
Power	kW	22	22.5	15.8
Voltage	V	-	-	-
Max. area performance with 1 / 2 side brushes	m²/h	18000 / 21600	18000 / 21600	18000 / 21600
Working width	mm	1200	1200	1200
Working width with 1 or 2 brushes	mm	1500 / 1800	1500 / 1800	1500 / 1800
Waste container	l	500	500	500
Climbing ability	%	18	18	18
Working speed	km/h	12	12	12
Filter area	m²	7	7	10.5
Weight	kg	1415	1440	1400
Dimensions (L x W x H)	mm	2442 x 1570 x 1640	2442 x 1570 x 1640	2442 x 1570 x 1640
Order no.		1.186-123.0	1.186-124.0	1.186-134.0

KM 170/600 R D RIDE-ON SWEEPER

This extremely robust and powerful machine with 170 cm working width is designed for the most demanding tasks, thanks to its solid construction, large waste container and extensive features.



Drive		4-stroke diesel engine / Yanmar
Power	kW	35
Max. area performance with 1 / 2 side brushes	m²/h	23520 / 28000
Working width	mm	1350
Working width with 1 or 2 brushes	mm	1680 / 2000
Waste container	l	600
Climbing ability	%	18
Working speed	km/h	14
Filter area	m²	10
Weight	kg	1530
Dimensions (L x W x H)	mm	2450 x 1750 x 1665
Order no.		1.186-127.0

PRESSURE WASHERS

We develop products that allow you to clean faster, more conveniently and more successfully, with less effort and therefore less physical strain or with quicker setup required, saving you time. Examples of this include our revolutionary EASY!Force high-pressure gun and our unique EASY!Lock quick-release couplings.

HDS 801 D COMPACT CLASS CLASS

These entry-level mobile machines feature powerful, economical petrol and diesel engines and offer useful safety features such as a safety valve against overpressure.



Engine manufacturer	Lombardini
Motor type	15 LD 225 / diesel
Motor rating	kW / hp 3.5 / 4.8
Flow rate	l/h 600
Working pressure	bar / MPa 140 / 14
Max. temperature	°C max. 80
Weight	kg 130
Dimensions (L x W x H)	mm 1168 x 862 x 767
Consumption of heating oil	kg/h 4.1
Order no.	1.210-901.0

HDS 1000 BE 10-LITRE CLASS

High-quality and reliable machine for diverse uses in construction, municipal, agriculture and forestry. Easy to mount on vehicles for space-saving use.



Engine manufacturer	Honda
Motor type	GX 390 / petrol
Motor rating	kW / hp 9.5 / 13
Flow rate	l/h 450-900
Working pressure	bar / MPa 40-210 / 4-21
Max. temperature	°C 80 / 98
Weight	kg 175.7
Dimensions (L x W x H)	mm 1100 x 750 x 785
Consumption of heating oil	kg/h 5.6
Order no.	1.811-942.0



HDS 7/16 C HDS 5/12 C HOT WATER PRESSURE WASHER

Our hot water pressure washers of the compact class are true all-rounders. As universal professional machines, they meet virtually any of your individual cleaning needs.



		HDS 7/16 C	HDS 5/12 C
		Economical ecoefficiency mode Intuitive single-button selector switch Powerful three-phase motor	Economical ecoefficiency mode Intuitive single-button selector switch Entry-level model in the compact class
Current type	Ph / V / Hz	3 / 400 / 50	1 / 240 / 50
Connection load	kW	4.7	2.9
Flow rate	l/h	270-660	500
Working pressure	bar / MPa	30-160 / 3-16	120 / 12
Max. temperature	°C	80	80
Weight	kg	105.8	93.4
Dimensions (L x W x H)	mm	1060 x 650 x 920	1060 x 650 x 920
Fuel tank	l	15	15
Heating oil consumption, full load/ ecoefficiency	kg/h	4.1 / 3.3	3.2 / 2.6
Order no.		1.173-900.0	1.272-902.0

HDS 5/11 HDS UPRIGHT CLASS

These high-performance, robust upright machines offer outstanding manoeuvrability, easy transport and intuitive operation. Ideal for tradesmen, commercial use and contract cleaners.



Current type	Ph / V / Hz	1 / 230-240 / 50
Connection load	kW	2.2
Flow rate	l/h	450
Working pressure	bar / MPa	110-110 / 11-11
Max. temperature	°C	80
Weight	kg	67.1 69.9
Dimensions (L x W x H)	mm	620 x 620 x 995 620 x 620 x 1160
Fuel tank	l	6.5
Consumption of heating oil	kg/h	2.4
Order no.		1.064-902.0 -903.0



HDS 17/20 DE TR1 HOT WATER TRAILER

Self-sufficient and mobile the HDS 17/20 hot water high-pressure cleaner works without power source at pressures of 200 bar. The highly-efficient HDS Trailer is suitable for the municipal sector, industry and construction.



Engine manufacturer		Yanmar
Fuel		Diesel
Motor rating	kW	19
Flow rate	l/h	900-1700
Working pressure	bar / MPa	70-200 / 7-20
Max. temperature	°C	80 / 98
Empty weight	kg	950
Dimensions (L x W x H)	mm	3646 x 1747 x 1735
Diesel consumption, full load	kg/h	11.8
Diesel consumption, ecoefficiency mode	kg/h	9.7
Order no.		0.300-308.0

MUNICIPAL MACHINES

We know your needs and requirements extremely well. The work you carry out is diverse – from maintaining green areas to street cleaning, from snow clearing to plant watering – and we have precisely the municipal equipment you need for success: Powerful vacuum sweepers, versatile implement carriers, universal and specialist implements, and the latest battery-powered machines. In short: Effective equipment for maximum efficiency.

MIC 34 COMPACT CLASS



Where it is not possible to use large vehicles, it is time for our implement carriers MIC 26 C and MIC 34 C. Their slim design makes these perfect for paths or in parks – without compromising the power or performance. With its powerful 24 kW turbo diesel engine, the MIC 34 C also easily tackles energetic tasks such as mowing with grass pick-up or weed removal.

MC 42



With its generously proportioned, 1.45 m³ cab, all-round visibility, intuitive operating concept and integrated quick-change system, it is rare to find such a comfortable, user-friendly workstation. The environmentally friendly engine, which even complies with the STAGE-V exhaust emissions standard, enables our economical MIC 35/42 implement carrier to be used even in low-emission zones.

Drive / Engine		4-stroke diesel engine / Kubota
Power	kW / hp	24 / 34
Exhaust emissions standard		STAGE IIIA
Speed	km/h	20
Working speed	km/h	20
Fuel tank	l	37
Turning circle (inner)	mm	750
Weight, empty	kg	950
Total permissible weight	kg	1750
Dimensions (L × W × H)	mm	2470 × 1090 × 1970
Order no.		1.442-214.2

Drive / Engine		Three-cylinder diesel engine with DPF/Yanmar
Power	kW / hp	31 / 42
Exhaust emissions standard		STAGE V ready
Speed	km/h	25
Working speed	km/h	25
Fuel tank	l	41
Turning circle (inner)	mm	910
Weight, empty	kg	1400
Total permissible weight	kg	2500
Dimensions (L × W × H)	mm	3085 × 1070 × 1980
Order no.		1.442-250.2

MC 130 MIDDLE CLASS



Vacuum sweeper and implement carrier in one: Our MC 130 combines both of these functions in a single 3.5-tonne machine, which performs well in both large, open spaces and more confined spaces in town and city centres. And it goes without saying that it can be used all year round. It boasts a comfortable, two-seater cab and an intuitive operating concept, with two joysticks, an “eco” button and a central multifunctional display.

MC 250 CITY SWEEPER



The MC 250 offers an unrivalled cleaning performance with low engine speed, generous 2.2 m³ waste container volume, a high transport speed of 60 km/h and maximum driving comfort thanks to the hydro-pneumatic suspension and independent suspension.

Drive / Engine		4-cylinder diesel engine / Kubota
Power	kW / hp	36.5 / 50
Exhaust emissions standard		STAGE IIIA
Speed	km/h	40
Working width	mm	1200
Max. working width with 3 side brushes	mm	2600
Turning circle (inner)	mm	1210
Container capacity	l	1000
Fresh water tank	l	195
Weight, empty	kg	2275
Total permissible weight	kg	3500
Dimensions (L × W × H)	mm	3950 × 1200 × 1990
Order no.		1.442-230.2

Drive / Engine		Diesel
Power	kW / hp	
Exhaust emissions standard		Euro 6
Speed	km/h	60
Working width	mm	2625
Max. working width with 3 side brushes	mm	2710
Turning circle (inner)	mm	
Container capacity	l	2500
Fresh water tank	l	200
Weight, empty	kg	3800
Total permissible weight	kg	6000
Dimensions (L × W × H)	mm	4491 × 1300 × 1995
Order no.		1.442-230.2



ESCALATOR CLEANERS

Spotlessly clean in next to no time: Kärcher stair and escalator cleaners produce thoroughly clean results on escalators and travelators.

BR 47/35 ESC ESCALATOR CLEANER

Escalator cleaning while in use

Our escalator cleaners deliver squeaky clean results on all moving walkways and escalators – even while in use. For both maintenance and deep cleaning.



1 Excellent suction power

The applied water is reliably sucked back into the machine by the two powerful suction turbines together with four straight suction hoses and matching combs. Prevents water from dripping into the escalator shaft.

2 Suitable for escalators

Combs which enter the grooves in the escalator provide the necessary vacuum. Different combs are available to suit different types of escalators. This ensures that the moisture is effectively vacuumed from the escalator.

Brush working width	mm	470
Working width, vacuuming	mm	470
Fresh/dirty water tank	l	35 / 35
Brush speed	rpm	870-1090
Container capacity	-	-
Brush motor power	W	1100
Suction motor	W	800
Water flow	l/h	60
Pressure	bar	4-7
Voltage	V	220-240
Frequency	Hz	50-60
Weight	kg	90
Dimensions (L x W x H)	mm	1200 x 670 x 1100
Order no.		1.310-109.0

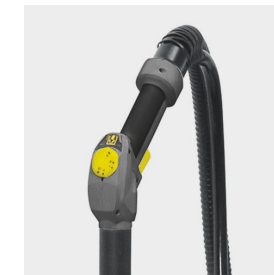
STEAM CLEANERS

Our professional steam cleaners and steam generating vacuum cleaners prove that steam is more than just hot air. For cleaning reliably without the use of chemicals, these machines are efficient and hygienic. Steam cleaners and steam generating vacuum cleaners are used in wet and hygiene areas, on all hard floors, glass and tiled surfaces, as well as fittings and, with the right accessories, textile surfaces.

STEAM VACUUM CLEANERS

Hygiene, non-stop

The user-friendly SGV 6/5 and SGV 8/5 steam vacuum cleaners ensure optimal hygiene. They are steam cleaners and wet and dry vacuum cleaners in one, with an EASY Operation switch, secure accessory integration and a hand tool for controlling the steam/vacuum function. With the chemical and self-cleaning functions, the SGV 8/5 provides very hygienic results.



1 Extremely user-friendly thanks to EASY Operation

One rotary switch for all functions. Simple and quick handling, with no need for extensive training. Self-explanatory symbols make the machine easy to understand and simplify operation.

2 Handle with trigger for convenient function control

Time-saving, flexible, easy and direct control of functions during use. The most important functions, like water/steam regulation, can be adjusted and there is an on/off switch for the vacuum function. Easily accessible and securely stored. A carrying frame allows easy removal of the nozzle accessories.

SGV 8/5

SGV 6/5

EASY Operation switch
Self-cleaning function
Chemical function

EASY Operation switch
Convenient operation using the hand tool
VapoHydro function

Technical data

Voltage	V	220-240	220-240
Heating output	W	3000	3000
Tank capacity	l	5	5
Cable length	m	7,5	7,5
Steam pressure	bar	8	6
Weight without accessories	kg	40	39
Dimensions (L x W x H)	mm	640 x 495 x 965	640 x 495 x 965
Order no.		1.092-012.0	1.092-002.0



CARPET AND UPHOLSTER CLEANERS

Carpets in offices, hotels and schools are subject to heavy traffic every day. This is where our carpet cleaners have proven invaluable. They are robust, powerful, versatile and suitable for deep and intermediate cleaning of carpets and removing stains on textile surfaces. Our carpet cleaners are also ideal for deep cleaning upholstery and car seats. And, with the right accessories, they can even be used to clean tiles.

BRC 40/22 C DEEP CARPET CLEANER

In contrast to other deep carpet cleaners, the very manoeuvrable BRC 40/22 C can, thanks to a rotatable brush head which ensures propulsion, also clean forwards, meaning that additional inconvenient passes can be avoided. In this way, it results in time savings of at least 30% in comparison and improves productivity to a previously unknown level.



Area performance (deep cleaning/ iCapsol intermediate cleaning)	m ² /h	500 / 900
Air flow rate	l/s	47
Vacuum	mbar / kPa	299 / 30
Spray pressure, deep cleaning	bar	7
Spray rate, deep cleaning	l/min	2.5
Brush working width	cm	40
Working width, vacuuming	cm	48
Fresh/dirty water tank	l	22 / 19
Turbine/brush motor rating	W	1119 / 400
Mains voltage	V	220-240
Frequency	Hz	50-60
Weight	kg	65
Dimensions (L x W x H)	mm	889 x 470 x 1118
Order no.		1.008-062.0

BRC 40/22 C DEEP CARPET CLEANER

Kärcher carpet cleaners are used for basic cleaning of large carpeted areas economically and efficiently. Suitable for conventional spray extraction and interim carpet cleaning using the new RM 768 iCapsol detergent, dirt dries within 20 minutes and crystallises. The dirt can then be vacuumed up easily.



Area performance (deep cleaning/ iCapsol intermediate cleaning)	m ² /h	350 / 1000
Air flow rate	l/s	45
Vacuum	mbar / kPa	300 / 30
Spray pressure, deep cleaning	bar	7
Spray rate, deep cleaning	l/min	3.2
Brush working width	mm	410
Working width, vacuuming	mm	450
Fresh/dirty water tank	l	45 / 38
Turbine power	W	1100
Brush motor power	W	600
Mains voltage	V	220-240
Frequency	Hz	50
Weight	kg	48
Dimensions (L x W x H)	mm	770 x 545 x 1250



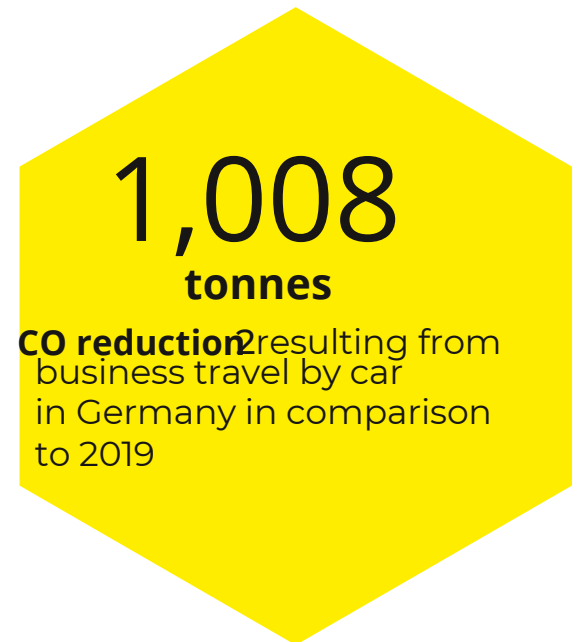
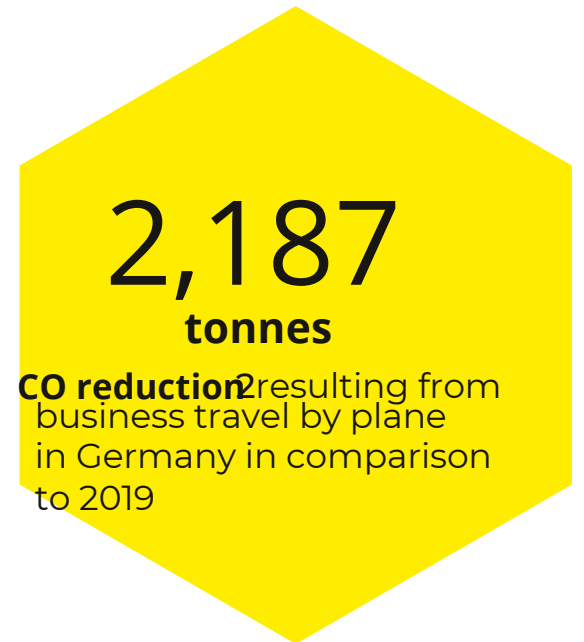
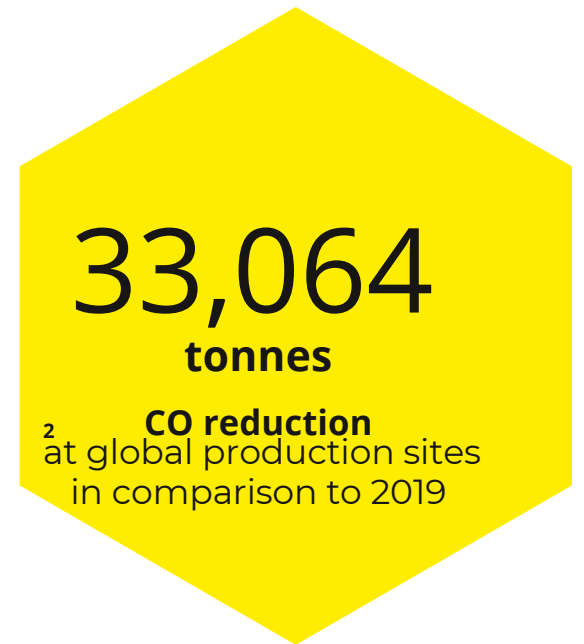
SUSTAINABILITY GOALS

Our measures aim to achieve climate-neutral production, recycling of raw materials and a reduction in plastic packaging. Sustainability is deeply embedded in the global supply chain. When it comes to social and societal issues, we concentrate on preserving values.

ZERO EMISSIONS.

From 2021, Kärcher factories around the world will be climate neutral:
 the leading climate-neutral company in the cleaning market with CO₂-free global production. We use green energy and compensate for emissions that we cannot avoid by funding climate protection projects. Many of our factories are already equipped with LED lighting and photovoltaic systems. Our largest facility, in Quistello, Italy, produces 360,000 kWh of power per year on a floor area of 11,500 m². In Banbury, United Kingdom, we succeeded in installing just under 1,000 solar panels at once and therefore generating 44% of the subsidiary's annual power consumption by means of the solar system. At our headquarters in Winnenden, we also use a photovoltaic system and close the material cycle by repurposing single-use pallets in a heating system for the buildings.

From 2021, business travel within Germany and from Germany to destinations abroad will be climate neutral:
 resulting business travel and the greenhouse gas emissions resulting from business travel by train, car and plane. We compensate for emissions that we cannot avoid. Formats such as digital conferences, which are becoming increasingly established in our company, have a role to play here. We are further increasing the number of electric vehicles in our fleet.



REDUCE, REUSE, RECYCLE.

By 2025, we will optimise the sustainability of all product packaging

to ensure the stability of our products and product surfaces to achieve plastic-free packaging. We already succeeded in completely doing away with polystyrene and switching over to cardboard for our OC 3 mobile outdoor cleaner. This way, we were also able to reduce the overall size of the packaging.

By 2025, our pressure washers from the Home & Garden range will have a recycled plastic content of up to 50%

We are reducing and systematically replacing the amount of virgin plastic in our products. Since 2012, we have managed to quadruple the amount of recycled plastic in our machines. To manufacture the spray lances for our pressure washers, we have switched to recycled plastic and use nylon 66. The recycled material used is extracted from fabric in returned airbags and material left over from their production process. By using this in our production, we close the cycle.

From 2020, we will support the reduction and reuse of ocean plastic

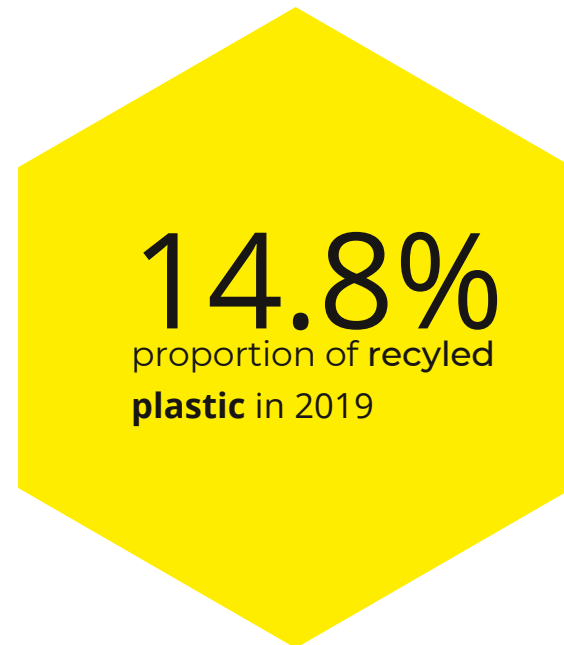
We collaborate with the One Earth One Ocean (OEEO) environmental organisation to reduce the pollution caused by ocean plastic. As part of this cooperation, we support beach clean-up campaigns and the technical innovations from OEEO which, for example, collect plastic in rivers or estuaries and return this to the reusable material cycle. We successfully completed our first joint projects with OEEO in 2019.

By 2025, we target a zero plastic waste pilot production

to reduce the plastic packaging waste from local suppliers to zero, and thus make our headquarters the model for further production sites. We are already implementing this approach with our internal goods transport. For example, in Winnenden, Germany certain components are being packed in multi-use boxes instead of in foil for transportation, which saves 3,000 kg of foil each year.

By 2025, sustainability will be an integral part of new business models

for Kärcher such as sharing, services and recycling. Kärcher Used Equipment GmbH specialises in the preparation and Europe-wide sale of used machines and thereby ensures that machines remain in use for longer, instead of being disposed of. We are exploring new approaches to sustainable product development with the Kalea kitchen composter. The device, developed in-house at Kärcher, turns kitchen waste into nutrient-rich compost in just 48 hours thanks to its sophisticated technology.



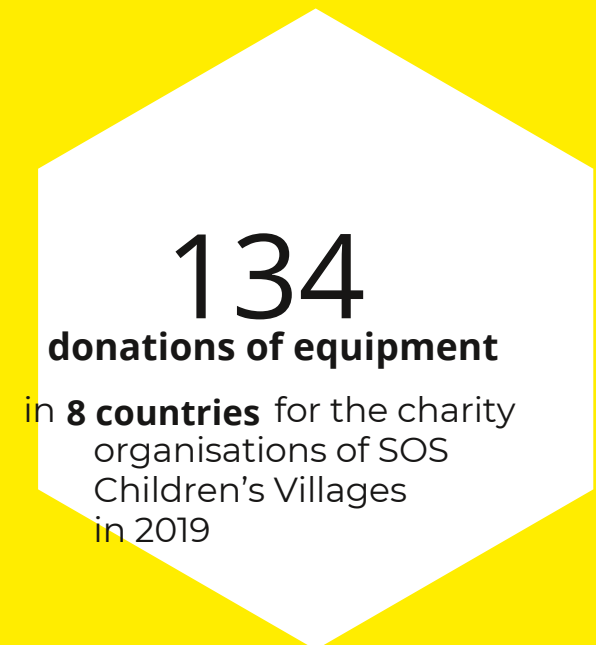
SOCIAL HERO.

By 2025, our social commitment will focus on preserving values

to ensure that all of our social commitment activities around the world share a common purpose. In all three areas – donations and sponsorship, long-term cooperation and employee commitment – we take our role as a social stakeholder seriously and are therefore dedicated to preserving values. These may be cultural values, as is the case with our cultural sponsorship, or family values, like our cooperation with SOS Children's Villages. Kärcher has supported SOS Children's Villages in 35 countries since cooperation began in 2011.

By 2025, we will establish a proactive supplier risk management system for sustainability:

to analyse and systematically improve the social and environmental impact of our direct suppliers. To achieve this, we establish sustainability as one of the most important deciding factors for selecting new suppliers and also assessing current suppliers. As part of this strategy, we utilise global audits and a comprehensive pool of data, as sustainability and punctual delivery go hand in hand at Kärcher.



DELIVERY, TRAINING AND SERVICE

Choosing the right cleaning equipment is only the first stage of your partnership with Kärcher Hire. Once we have ascertained your unique requirements and built a bespoke cleaning equipment solution, the next integral stage starts; Delivery, Training and Service.

BESPOKE TRAINING AND DEPLOYMENT

We deliver more than just quality machines:

Kärcher Hire provides free site surveys, demonstrations, training and advice to suit all of your site requirements.

In addition to customer support and specialist floorcare technicians, the Kärcher team is on hand to ensure you and your staff will receive accredited training to achieve optimum cleaning results.

Via our partnership with Kärcher, we also have access to Kärcher's purpose-built Training Academy in Banbury, which offers an unparalleled training environment for your cleaning operatives.

Our demonstration team will:

- Assess and advise best practice for your specific machine and flooring combination
- Give training candidates a clear overview of:
 - Training outcome expectations
 - Machine capability
 - Daily maintenance
 - Safe working procedures
 - Operation and application of machines
- Provide a certified capability assessment



The Kärcher Hire team regularly attend new product and product refresher training at Kärcher's Training Academy to ensure their knowledge and skills are up-to-date, guaranteeing the highest quality of training.



HIRE

Please contact us for
more information:

Pressure Clean Ltd

Unit 4, 72 Bell Lane
Uckfield
East Sussex
TN22 1QL

Phone: 01825 705777

email:
enquiries@pressureclean.co.uk

www.pressureclean.co.uk