

THE
**ELECTRICALLY
HEATED** RANGE



MAC
INTERNATIONAL

INTRODUCING THE MAC STATIC ELECTRICALLY HEATED PRESSURE WASHER RANGE

MAC has quite literally turned the pressure washer industry on its head with its new range of Electrically Heated Static Pressure Washers. Utilising the latest technology and innovation we have re-engineered all electric machines to provide an effective cleaning option, permanently heated with zero emissions.

We have created a range of machines to allow for every electrical eventuality, including our 18/24kw machine providing the full benefit of 24kw performance from a standard 32amp power supply – A real game changer for general industry!



**MANUFACTURED IN
GREAT BRITAIN**



LEADING THE WAY TO A MORE SUSTAINABLE FUTURE

KEY BENEFITS

- ZERO CO₂ EMISSIONS AT POINT OF USE
- REDUCED FUEL COSTS
- MEETS GOVERNMENT CO₂ EMISSION GUIDELINES
- REDUCED CARBON FOOTPRINT
- REDUCED MAINTENANCE COSTS
- REDUCTION IN WASTE ENERGY FROM MACHINE
- ADVANCED TECHNOLOGY
- ACCURATE TEMPERATURE SETTING

PERFECT FOR THE FOLLOWING INDUSTRIES

- FOOD AND DRINK
- INDUSTRIAL ENVIRONMENTS
- PHARMACEUTICAL & PETROCHEMICAL
- CAR CLEANING
- DIESEL FREE ZONES
- CO₂ FREE ZONES
- INDOOR CLEANING AREAS
- PRODUCTION AREAS

OUR COMMITMENT TO REDUCING CO₂ EMISSIONS BY 2030



With the governments commitment to reducing the UK's carbon footprint to Net Zero by 2050 and a 50% reduction by 2030, everything points towards electricity as the power of the future for the pressure washer industry. The government has set a clear path towards a carbon neutral future, with electricity to be generated by wind, solar and nuclear power. Electrically heated pressure washers are 100% efficient at the point of use and with electricity being generated by sustainable sources in the future it will become completely carbon neutral.

The MAC Electric Static range is exhaust gas and emission free, which is essential for food environments and other areas where diesel usage is prohibited or unwanted.

MAC PLANTMASTER ELECTRIC

ELECTRICALLY HEATED STATIC PRESSURE WASHER



DESIGNED & BUILT TO MEET THE DEMANDS OF THE NEW MARKETPLACE, WHERE ELECTRICALLY HEATED MACHINES ARE REQUIRED. ESPECIALLY FOR FOOD APPLICATIONS, HOWEVER GROWING INTO ALL SECTORS.

- 1** 80°C WITH MARKET LEADING HEAT RETENTION
- 2** 375 LTR STAINLESS STEEL DOUBLE INSULATED WATER TANK
- 3** HIGH QUALITY STEEL CABINET WITH ALL STANDARD PLANTMASTER CABINET FEATURES



CONTROL PANEL & DIGITAL TEMPERATURE DISPLAY

CABINET FINISH

- Powder coated steel cabinet with lockable controls
- High quality matte paint finish
- Lockable powder coated steel front door
- Zinc phosphate steel pre-treatment for weather proofing
- Hinged and removable cabinet front door and lid

STANDARD FEATURES

OF THE MAC PLANTMASTER ELECTRIC RANGE



STANDARD FEATURES

- Timed total stop shutdown system
- Low revving 1450rpm pump & motor
- High temperature pump
- Unique stainless steel subframe construction
- Easy access for servicing
- Double insulated hot water tank
- Low thermal loss in standby
- Maximum temperature output 80°C
- Digital temperature display
- Simple 24v controls
- Available from 18kW to 48kW

MAC 21TECH

USER FRIENDLY CONTROL SYSTEM

FEATURES

- Variable total timed shutdown
- Soft start for heating elements
- Low water protection
- Anti-spike system
- Built in hour counter
- Fully bespoke design function - Siemens PLC

SIEMENS

NEW FOR 2021



REMOVABLE HINGED FRONT
DOOR AND LID

SEE PAGE 31 FOR
ACCESSORIES
AND OPTIONAL
EXTRAS



MAC
ELECTRIC

18/24
DESIGN

THE MAC 18/24 MACHINE DESIGNED TO RUN ON A STANDARD 32AMP POWER SUPPLY - INNOVATION IN TECHNOLOGY

	PLANTMASTER E1	PLANTMASTER E2	PLANTMASTER E3	PLANTMASTER E4	PLANTMASTER E5	PLANTMASTER E6	PLANTMASTER E7
Water Flow	11lt per minute	13lt per minute	13lt per minute	15lt per minute	13lt per minute	15lt per minute	18lt per minute
Pressure	120bar, 1740psi	170bar, 2465psi	170bar, 2465psi	200bar, 3000psi	170bar, 2465psi	200bar, 3000psi	160bar, 2320psi
Motor Specification	4hp, 3kW, 1450rpm	7.5hp, 5.5kW, 1450rpm	7.5hp, 5.5kW, 1450rpm	7.5hp, 5.5kW, 1450rpm	7.5hp, 5.5kW, 1450rpm	7.5hp, 5.5kW, 1450rpm	7.5hp, 5.5kW, 1450rpm
Heating Power	18-24kW	24Kw	36Kw	36Kw	48Kw	48Kw	48Kw
Volts Amps Watts	400v, 32A, 24kW	400v, 45A, 30kW	400v, 63A, 42kW	400v, 63A, 42kW	400v, 80A, 54kW	400v, 80A, 54kW	400v, 80A, 54kW
Shutdown System	Timed total stop	Timed total stop	Timed total stop	Timed total stop	Timed total stop	Timed total stop	Timed total stop
Max. Temperature	80°C	80°C	80°C	80°C	80°C	80°C	80°C
Weight	238kg	240kg	242kg	245kg	244kg	247kg	250kg
Dimensions (h x w x d)	130 x 100 x 80cm	130 x 100 x 80cm	130 x 100 x 80cm	130 x 100 x 80cm	130 x 100 x 80cm	130 x 100 x 80cm	130 x 100 x 80cm



DOWNLOAD THE DATASHEET FOR FULL SPECIFICATION AT WWW.MACINTERNATIONAL.CO.UK

MANUFACTURED IN GREAT BRITAIN

MAC PLANTMASTER S.S. ELECTRIC

THE PREMIUM STAINLESS STEEL OPTION



THREE REASONS TO CHOOSE STAINLESS STEEL:

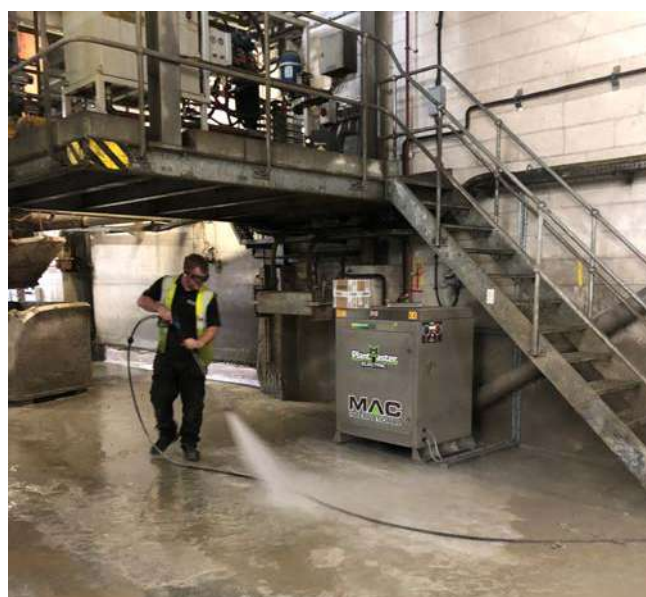
- 1** OUR 316L STAINLESS STEEL CABINETS ARE THE PINNACLE OF QUALITY AND DURABILITY
- 2** GUARANTEED RUST-PROOF TO SUIT ALL ENVIRONMENTS
- 3** FOOD SAFE



**MANUFACTURED IN
GREAT BRITAIN**

CABINET FINISH

- Full 316L stainless steel cabinet with lockable controls
- Lockable stainless steel front door
- Hinged and removable cabinet front door and lid



PERFECT FOR GENERAL ALL-ROUND CLEANING - 80°C WHEN REQUIRED

STANDARD FEATURES

OF THE MAC PLANTMASTER S.S. ELECTRIC RANGE



STANDARD FEATURES

- Timed total stop shutdown system
- Low revving 1450rpm pump & motor
- High temperature pump
- Unique stainless steel subframe construction
- Easy access for servicing
- Double insulated hot water tank
- Low thermal loss in standby
- Maximum temperature output 80°C
- Digital temperature display
- Simple 24v controls
- Available from 18kW to 48kW

MAC 21TECH

USER FRIENDLY CONTROL SYSTEM

FEATURES

- Variable total timed shutdown
- Soft start for heating elements
- Low water protection
- Anti-spike system
- Built in hour counter
- Fully bespoke design function - Siemens PLC

SIEMENS

NEW FOR 2021



SEE PAGE 31 FOR ACCESSORIES
AND OPTIONAL EXTRAS

MAC
ELECTRIC

18/24
DESIGN

THE MAC 18/24 MACHINE DESIGNED TO RUN ON A STANDARD 32AMP POWER SUPPLY - INNOVATION IN TECHNOLOGY

	PLANTMASTER SSE1	PLANTMASTER SSE2	PLANTMASTER SSE3	PLANTMASTER SSE4	PLANTMASTER SSE5	PLANTMASTER SSE6	PLANTMASTER SSE7
Water Flow	11lt per minute	13lt per minute	13lt per minute	15lt per minute	13lt per minute	15lt per minute	18lt per minute
Pressure	120bar, 1740psi	170bar, 2465psi	170bar, 2465psi	200bar, 3000psi	170bar, 2465psi	200bar, 3000psi	160bar, 2320psi
Motor Specification	4hp, 3kW, 1450rpm	7.5hp, 5.5kW, 1450rpm	7.5hp, 5.5kW, 1450rpm	7.5hp, 5.5kW, 1450rpm	7.5hp, 5.5kW, 1450rpm	7.5hp, 5.5kW, 1450rpm	7.5hp, 5.5kW, 1450rpm
Heating Power	18-24kW	24Kw	36Kw	36Kw	48Kw	48Kw	48Kw
Volts Amps Watts	400v, 32A, 24kW	400v, 45A, 30kW	400v, 63A, 42kW	400v, 63A, 42kW	400v, 80A, 54kW	400v, 80A, 54kW	400v, 80A, 54kW
Shutdown System	Timed total stop	Timed total stop	Timed total stop	Timed total stop	Timed total stop	Timed total stop	Timed total stop
Max. Temperature	80°C	80°C	80°C	80°C	80°C	80°C	80°C
Weight	263kg	265kg	267kg	270kg	269kg	272kg	275kg
Dimensions (h x w x d)	130 x 100 x 80cm	130 x 100 x 80cm	130 x 100 x 80cm	130 x 100 x 80cm	130 x 100 x 80cm	130 x 100 x 80cm	130 x 100 x 80cm



DOWNLOAD THE DATASHEET FOR FULL SPECIFICATION AT WWW.MACINTERNATIONAL.CO.UK

MANUFACTURED IN GREAT BRITAIN

MAC REVOLUTION ELECTRIC

COMPACT ELECTRICALLY HEATED STATIC PRESSURE WASHER

GO GREEN
CO₂ EMISSION FREE



IMAGES SHOW MACHINE FITTED WITH
INTERNAL HOSE REEL OPTION

THE MAC REVOLUTION ELECTRIC IS DESIGNED TO WORK ON A STANDARD 32AMP 400V SUPPLY. THE 170LTR WATER TANK ALLOWS SUPER FAST REHEATING AND HIGH RUNNING TEMPERATURES, UTILISING 24KW HEATERS FROM THE STANDARD 32AMP SUPPLY.

**18/24
DESIGN**

- 1** 80°C WITH MARKET LEADING HEAT RETENTION
- 2** 170 LTR STAINLESS STEEL DOUBLE INSULATED WATER TANK
- 3** HIGH QUALITY STEEL CABINET WITH ALL STANDARD REVOLUTION CABINET FEATURES



EASY TO USE CONTROL PANEL



CABINET FINISH

- Powder coated steel cabinet with lockable controls
- High quality matte paint finish
- Lockable powder coated steel front door
- Zinc phosphate steel pre-treatment for weather proofing
- Hinged and removable cabinet front door and lid

STANDARD FEATURES

OF THE MAC REVOLUTION ELECTRIC RANGE



STANDARD FEATURES

- Timed total stop shutdown system
- Low revving 1450rpm pump & motor
- High temperature inter pump
- Unique stainless steel subframe construction
- Easy access for servicing
- Double insulated hot water tank
- Low thermal loss in standby
- Maximum temperature output 80°C
- Simple 24v controls
- Available from 18kW to 24kW

ALSO AVAILABLE IN FULL STAINLESS STEEL

MAC 21TECH

USER FRIENDLY CONTROL SYSTEM

FEATURES

- Variable total timed shutdown
- Soft start for heating elements
- Low water protection
- Anti-spike system
- Built in hour counter
- Fully bespoke design function - Siemens PLC

SIEMENS

NEW FOR 2021



IMAGE SHOWS MACHINE FITTED WITH INTERNAL HOSE REEL OPTION



REMOVABLE HINGED FRONT DOOR AND LID

SEE PAGE 31 FOR
ACCESSORIES
AND OPTIONAL
EXTRAS

THE MAC 18/24 MACHINE DESIGNED TO RUN ON A STANDARD 32AMP POWER SUPPLY - INNOVATION IN TECHNOLOGY

	REVOLUTION E1	REVOLUTION E2
Water Flow	11lt per minute	11lt per minute
Pressure	120bar, 1740psi	120bar, 1740psi
Motor Specification	4hp, 3kW, 1450rpm	4hp, 3kW, 1450rpm
Heating Power	18-24kW	24kW
Volts Amps Watts	400v, 32A, 24kW	400v, 32A, 27kW
Shutdown System	Timed	Timed
Max. Temperature	80°C Maximum	80°C Maximum
Weight	200kg	200kg
Dimensions (h x w x d)	130 x 90 x 70cm	130 x 90 x 70cm

18/24
DESIGN

THE MAC 18/24 MACHINE
DESIGNED TO RUN ON A STANDARD
32AMP POWER SUPPLY
INNOVATION IN TECHNOLOGY

MAC
ELECTRIC



DOWNLOAD THE DATASHEET FOR FULL SPECIFICATION AT WWW.MACINTERNATIONAL.CO.UK

MANUFACTURED IN GREAT BRITAIN

MAC REVOLUTION S.S. ELECTRIC

THE PREMIUM STAINLESS STEEL OPTION



THREE REASONS TO CHOOSE STAINLESS STEEL:

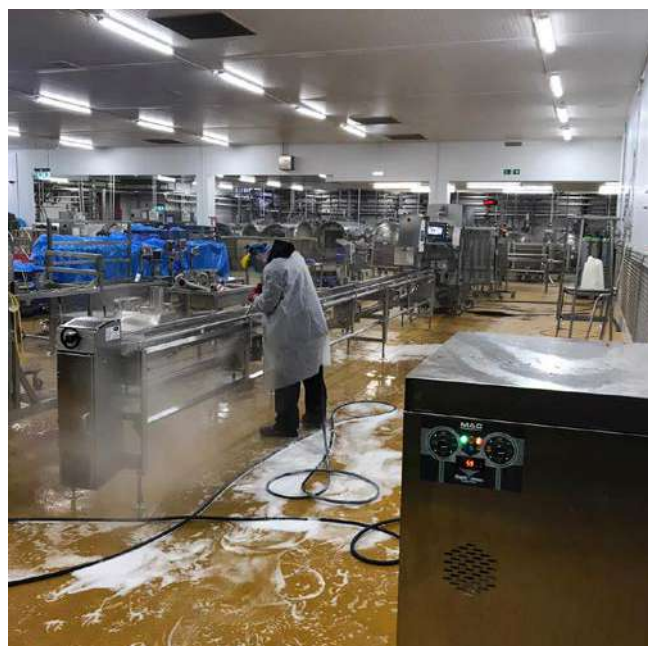
- 1** OUR 316L STAINLESS STEEL CABINETS ARE THE PINNACLE OF QUALITY AND DURABILITY
- 2** GUARANTEED RUST-PROOF TO SUIT ALL ENVIRONMENTS
- 3** FOOD SAFE



**MANUFACTURED IN
GREAT BRITAIN**

CABINET FINISH

- Full 316L stainless steel cabinet with lockable controls
- Lockable stainless steel front door
- Hinged and removable cabinet front door and lid



PERFECT FOR THE FOOD INDUSTRY

STANDARD FEATURES

OF THE MAC REVOLUTION ELECTRIC RANGE

GO GREEN
CO₂ EMISSION FREE



STANDARD FEATURES

- Timed total stop shutdown system
- Low revving 1450rpm pump & motor
- High temperature interpump
- Unique stainless steel subframe construction
- Easy access for servicing
- Double insulated hot water tank
- Low thermal loss in standby
- Maximum temperature output 80°C
- Simple 24v controls
- Available from 18kW to 24kW

MAC21TECH
USER FRIENDLY CONTROL SYSTEM

FEATURES

- Variable total timed shutdown
- Soft start for heating elements
- Low water protection
- Anti-spike system
- Built in hour counter
- Fully bespoke design function - Siemens PLC

SIEMENS

NEW FOR 2021



**SEE PAGE 31 FOR ACCESSORIES
AND OPTIONAL EXTRAS**

**MAC
ELECTRIC**

**18/24
DESIGN**

THE MAC 18/24 MACHINE DESIGNED TO RUN ON A STANDARD 32AMP POWER SUPPLY - **INNOVATION IN TECHNOLOGY**

	REVOLUTION SSE1	REVOLUTION SSE2
Water Flow	11lt per minute	11lt per minute
Pressure	120bar, 1740psi	120bar, 1740psi
Motor Specification	4hp, 3kW, 1450rpm	4hp, 3kW, 1450rpm
Heating Power	18-24kW	24kW
Volts Amps Watts	400v, 32A, 24kW	400v, 32A, 27kW
Shutdown System	Timed	Timed
Max. Temperature	80°C Maximum	80°C Maximum
Weight	200kg	200kg
Dimensions (h x w x d)	130 x 90 x 70cm	130 x 90 x 70cm



PRECISION ENGINEERED STAINLESS
STEEL CABINET

MANUFACTURED IN GREAT BRITAIN



DOWNLOAD THE DATASHEET FOR FULL SPECIFICATION AT WWW.MACINTERNATIONAL.CO.UK

THE MAC QUALITY ASSURANCE

CE CERTIFIED FOR UK & WORLD MARKETS



MAC International is the UK's largest manufacturer of Static Pressure Washers.

Your MAC distributor will design and install your perfect static pressure washer, built to your individual specifications accredited with full CE certification.



INNOVATIVE WATER TREATMENT SYSTEMS FROM MAC

BENEFITS OF THE MAC PRO FILTER SYSTEM

- INHIBITS SCALE
- PREVENT COIL CORROSION
- EXTENDED COIL LIFE
- REDUCE BROWN WATER
- PRE-FILTRATION OF MACHINE
- TREAT HARD OR SOFT WATER
- FAST ACTING TREATMENT
- PLANNED MAINTENANCE ITEM

MAC PRO FILTER

The MAC Pro Filter is specifically designed to offer pre-filtration to your pressure washer and greatly improve the quality of water passing through your machine.

The water flow passes through the cartridge holding polyphosphate polymer crystals. The crystals slowly dissolve in the water forming a thin coating of phosphate on all steel surfaces, including the coil. This microscopic film inhibits corrosion and scale build up and offers a very real solution for water softening and the reduction of brown and black water issues.

PLEASE SEE THE MAC TAC FILTER FOR LONGER USAGE AND ELECTRICALLY HEATED MACHINES



BESPOKE OPTIONS & ACCESSORIES



3 BUTTON REMOTE SYSTEM WITH SOLENOID

A high-quality Remote Control System with steel enclosure, allowing remote use of the machine, burner and chemical systems via on/off switches.



KEY FOB CONTROL

A contactless key fob reader aimed at providing ultimate security for your machine, limiting user access to key fob holders only. Perfect for sites with multi-users and an extremely popular system. Additional features are also available such as a data logger for full visibility of operators and usage time.



COIN OR TOKEN MECHANISM

A choice of coin or token mechanisms to start and stop the machine, available with or without programmed timers. Fully timed wash programmes are also available which are perfect for Buy Time Car Wash systems.



RANGE OF WATER TANKS

To provide a solution for all water supply eventualities we offer a vast range of water tanks. From 8lt stainless steel tanks to larger 75lt plastic tanks. All are designed to fit within our range of machines.



STAINLESS STEEL RAIN COVER

A high-quality stainless steel rain cover designed to be fitted over the top of your boiler exhaust flue, aimed at preventing rainfall and debris entering your boiler system.



MAC PRO FILTER

The MAC Pro Filter is designed especially for MAC International to protect the coil from hard or soft water by leaving a polyphosphate film on all steel surfaces.



MAC PLC DESIGN SERVICES

We offer a full range of PLC design services to provide any variety of wash programmes. Machines can be engineered to fit most site systems.



K SERIES START STOP BUTTON

A remote control switch designed specifically for our machines using K Series Timed Shutdown. A simple remote which includes a push button on switch and an emergency stop button.



USER HOUR COUNTER

A physical hour counter which can be fitted to any machine externally and provide hour usage of the machine.



HOSE REELS

A wide range of hose reels are available, from internal 20mt retractable reels to external 20mt or 40mt stainless steel manual reels. Our internal 20mt retractable hose reel is our best seller with door rollers and fitting to your machine included as standard.



STAINLESS STEEL LANCE HOLDER

A high-quality stainless steel lance holder designed to fit your wash lance and trigger. This can be fitted to all of our equipment either externally or mounted on your machine.



MAC TAC FILTER

The MAC TAC Filter uses Template Assisted Crystallization technology, creating nanosized crystals within the water flow. This prevents scale build-up and is a long-term solution designed to flood a larger water area.





THE UK'S PREMIER CLEANING EQUIPMENT SUPPLIER

MOBILE PRESSURE WASHERS
STATIC PRESSURE WASHERS
FLOORCARE



www.macinternational.co.uk