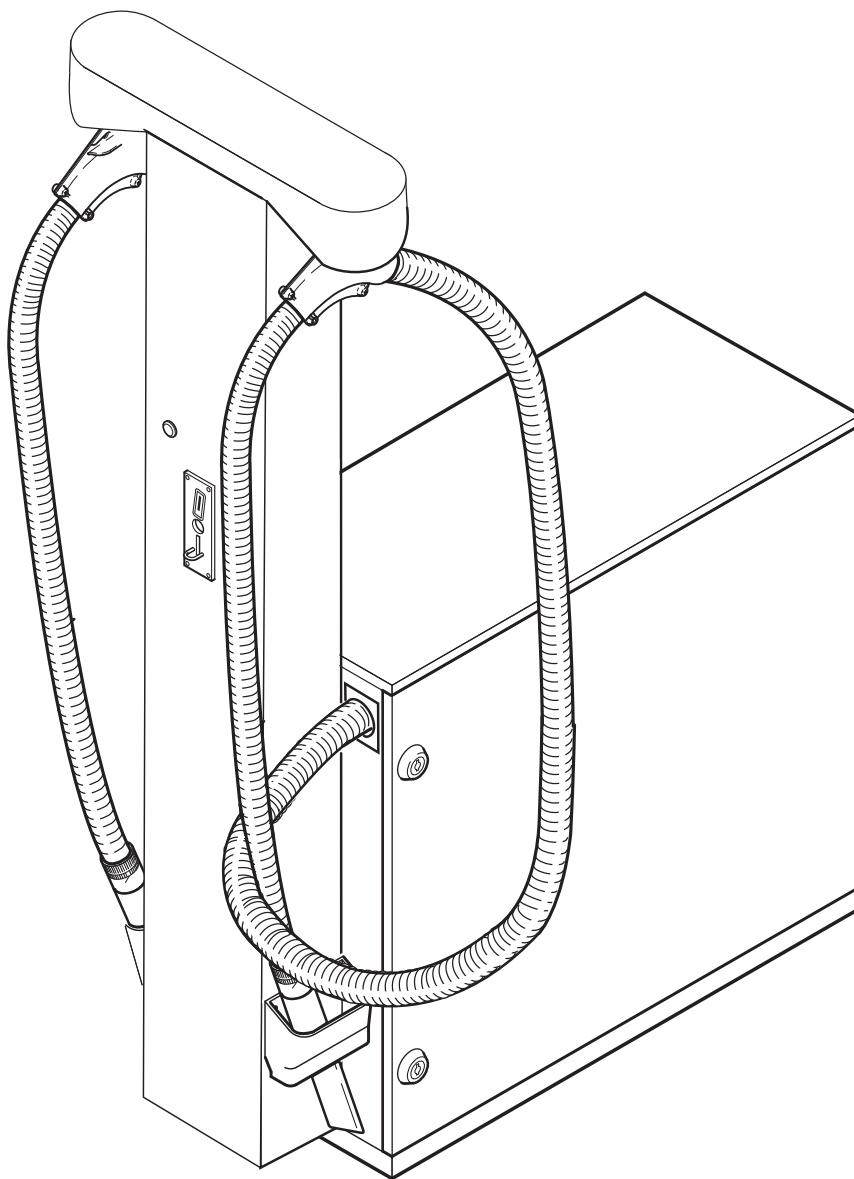
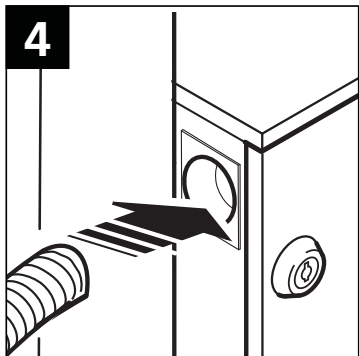
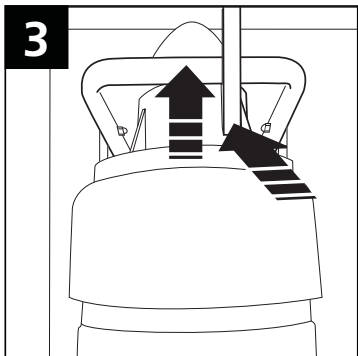
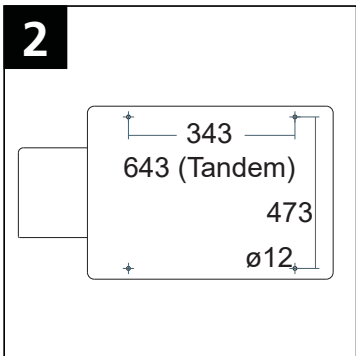
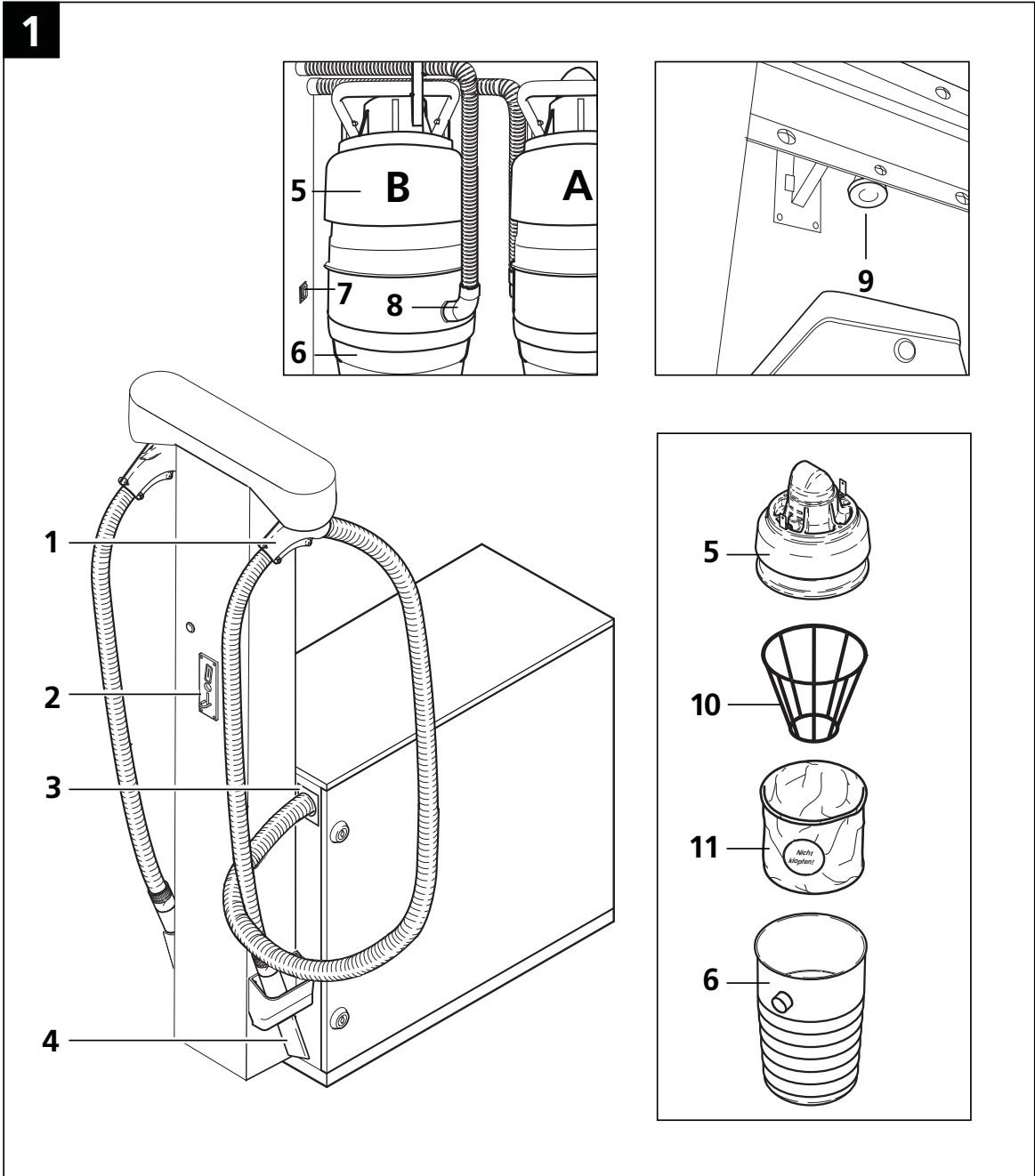


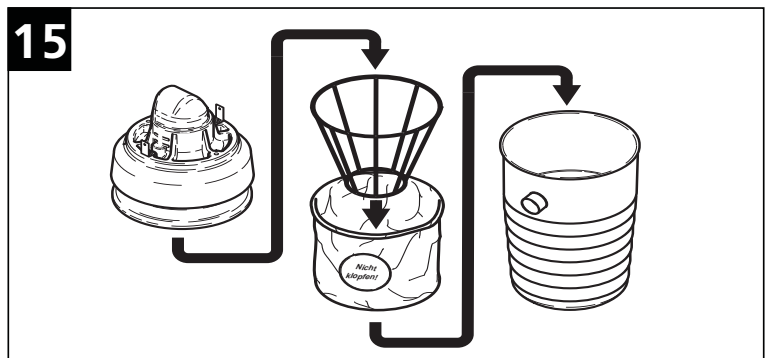
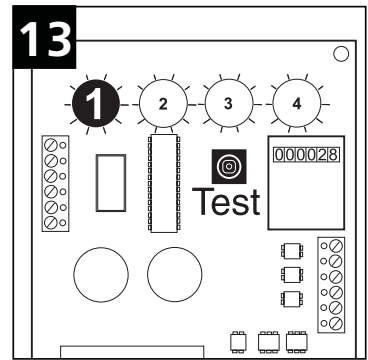
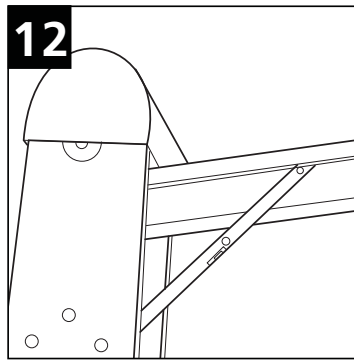
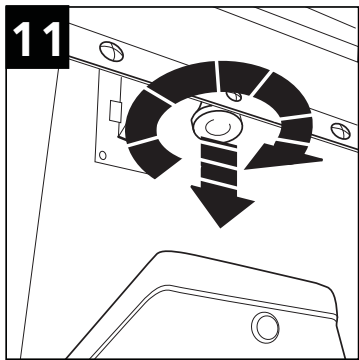
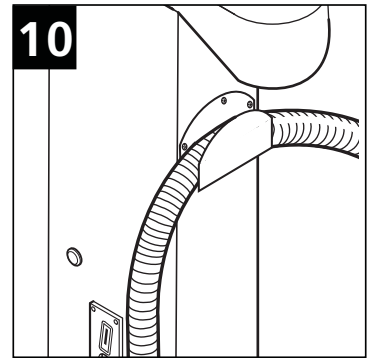
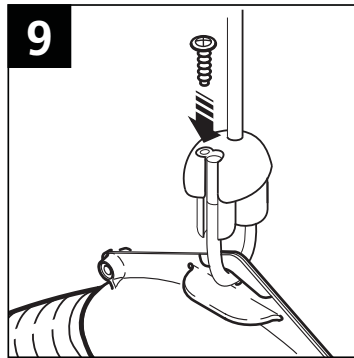
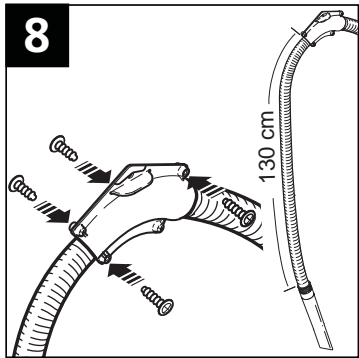
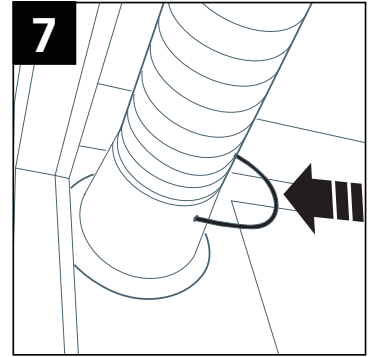
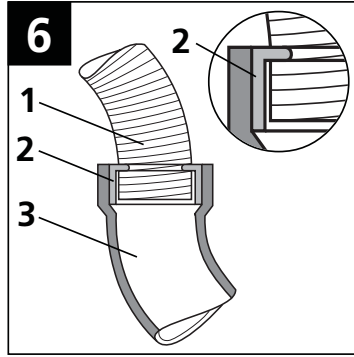
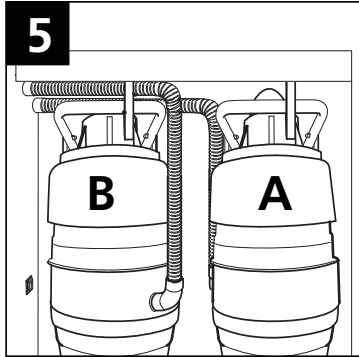
SB Station

Instructions for use



EN	5
DE	12
FR	19
NL	26
IT	33
NO	40
SV	47
DA	54
FI	61
ES	68
PT	75
EL	82
TR	89
SL	97
HR	104
SK	111
CS	118
PL	125
HU	132
RO	139
RU	146
ET	153
LV	160
LT	167







1 IMPORTANT SAFETY INSTRUCTIONS

1.1 Symbols used to mark instructions

DANGER


 Danger that leads directly to serious or irreversible injuries, or even death.

WARNING

 Danger that can lead to serious injuries or even death.

CAUTION

 Danger that can lead to minor injuries and damage.

 Before starting up your machine for the first time, this instruction manual must be read through carefully. Save the instructions for later use.

1.2 Instructions for use

Besides the operating instructions and the binding accident prevention regulations valid in the country of use, observe recognised regulations for safety and proper use.

1.3 Purpose and intended use

The SB Station is a selfservice vacuum cleaner suitable for picking up dry, non-flammable dusts normally encountered when cleaning the inside of motor vehicles. Liquids and health-endangering dusts must not be picked up. Accidents due to misuse can only be prevented by those using the machine.

READ AND FOLLOW ALL SAFETY INSTRUCTIONS.

This machine is suitable for picking up dry, non-flammable dust. Any other use is considered as improper use. The manufacturer accepts no liability for any damage resulting from such use. The risk for such use is borne solely by the user. Proper use also includes proper operation, servicing and repairs as specified by the manufacturer.

1.4 Important warnings

WARNING

- To reduce the risk of fire, electric shock, or injury, please read and follow all safety instructions and caution markings before use. This vacuum cleaner is designed to be safe when used for cleaning functions as specified. Should damage occur to electrical or mechanical parts, the cleaner and / or accessory should be repaired by a competent service station or the manufacturer before use in order to avoid further damage to the machine or physical injury to the user.
- Do not leave the machine when it is plugged in. Unplug from the socket when not in use and before maintenance.
- Do not use with damaged cord or plug. To unplug grasp the plug, not the cord. Do not handle plug or cleaner with wet hands. Turn off all controls before unplugging.

- Do not pull or carry by cord, use cord as a handle, close a door on cord, or pull cord around sharp edges or corners. Do not run cleaner over cord. Keep cord away from heated surfaces.
- Keep hair, loose clothing, fingers and all parts of the body away from openings and moving parts. Do not put any objects into openings or use with opening blocked. Keep openings free of dust, lint, hair, and anything else that could reduce the flow of air.
- This machine is not suitable for picking up hazardous dust.
- Do not use to pick up flammable or combustible liquids such as gasoline, or use in areas where they may be present.
- Do not pick up anything that is burning or smoking, such as cigarettes, matches or hot ashes.
- This appliance is not intended for use by persons (including children) with reduced physical, sensory or mental capabilities, or lack of experience and knowledge.
- Children shall be supervised to make sure that they do not play with the appliance.
- Cleaning and user maintenance shall not be made by children without supervision.
- Use extra care when cleaning on stairs.
- Do not use unless filters are fitted.
- If the cleaner is not working properly or has been dropped, damaged, left outdoors, or dropped into water, return it to a service center or dealer.
- If foam or liquid escapes from the machine, switch off immediately.
- Operators shall be adequately instructed on the use of these machines.
- This machine is for dry use only.
- It must be insured, that the lighting during use is adequate. Minimum lighting shall be 150 lx according to EN 12464-2.
- The machine shall be placed outside ATEX zone 0, 1, 2.
- Do only use suction hose delivered together with the machine.
- The power supply must be protected/equipped with residual current device or HPFI relay.
- After installation of the machine a minimum of one meter free space, around the machine, must be available. All hatches must be able to open freely without any obstacles at any time.

1.5 Double-insulated appliances*)

CAUTION

- Use only as described in this manual and only with the manufacturer's recommended attachments.
- BEFORE YOU PLUG IN YOUR CLEANER, check the rating plate at the cleaner to see if the rated voltage agrees within 10% of the voltage available.
- This appliance is provided with double insulation. Use only identical replacement parts. See instructions for servicing double insulated appliances.

In a double-insulated appliance, two systems of insulation are provided instead of grounding. No grounding means is provided on a double-insulated appliance, nor should a mean for grounding be added to the appliance. Servicing a double-insulated appliance requires extreme care and knowledge of the system, and should be done only by qualified service personnel. Replacement parts for a double-insulated appliance must be identical to the parts they replace. A double insulated appliance is marked with the words "DOUBLE INSULATION" or "DOUBLE INSULATED." The symbol (square within a square) may also be used on the product.

The machine is equipped with a specially designed cord which if damaged, must be replaced by a cord of the same type. This is available at authorised service centres and dealers and must be installed by trained personnel.

1.6 Electrical connection

WARNING

- The vacuum cleaner must not be used if the electrical cable or plug show any sign of damage. Regularly inspect the cable and the plug for damage. If this becomes damaged, it should be repaired only by Nilfisk or an authorised Nilfisk Service Dealer, in order to avoid a hazard.
- Do not handle the electrical cable or plug with wet hands.
- Do not unplug by pulling on cable. To unplug, grasp the plug, not the cable. The plug must always be removed from the socket outlet before starting any service or repair work of the machine or the cable.

1.7 Hazardous materials

WARNING

Vacuuming up hazardous materials can lead to serious or even fatal injuries.

The following materials must not be picked up by the machine:

- Hazardous dust
- Hot materials (burning cigarettes, hot ash, etc.)

- Flammable, explosive, aggressive liquids (e.g. petrol, solvents, acids, alkalis, etc.)
- Flammable, explosive dust (e.g. magnesium or aluminum dust, etc.)

1.8 Maintenance

Always keep the cleaner in a dry place. The cleaner is designed for continuous heavy work. Depending on the number of running hours – the dust filters should be renewed.


Keep the container clean with a dry cloth, and a small amount of spray polish.

For details of after sales service contact Nilfisk directly.

1.9 Regular servicing and inspection

Our general conditions of business are applicable with regard to the guarantee.

Unauthorized modifications to the appliance, the use of incorrect brushes in addition to using the appliance in a way other than for the intended purpose exempt the manufacturer from any liability for the resulting damage.

 As specified in European Directive 2012/19/EU on old electrical and electronic appliances, used electrical goods must be collected separately and recycled ecologically. Contact your local authorities or your nearest dealer for further information.

Operating instructions

The SB Station is a selfservice vacuum cleaner suitable for picking up dry, non-flammable dusts normally encountered when cleaning the inside of motor vehicles. Liquids and health-endangering dusts must not be picked up.

The pictorial quick reference guide

The pictorial quick reference guide is designed for helping you when starting up, operating and storing the unit.

Before starting

DO READ SAFETY INSTRUCTIONS BEFORE USE!

Description (fig. 1)

Operating elements:

- | | |
|----|-----------------------------|
| 1 | Hose retractor |
| 2 | Coin verifier |
| 3 | Suction hose fitting |
| 4 | Crevice nozzle |
| 5 | Suction unit |
| 6 | Dirt tank |
| 7 | Main switch |
| 8 | Adapter ring |
| 9 | Lock for coin verifier slot |
| 10 | Distance basket |
| 11 | Cloth insert filter |

Unpacking and preparing the unit

- Release the SB Station from the pallet. **NOTE!** Do not throw the packaging carton away. The drilling pattern for mounting the SB Station is printed on the carton. (Fig. 2)
- Open the door.
- Take the suction hoses out of the housing.
- Lift the suction unit with the brackets and secure in place. (Fig. 3).
- Take out the dirt tank and the accessories in the tank.

Setting up the unit:

- The machine is very heavy. Please see table with technical data in this manual. For installation of the machine can be lifted by two persons. however care should be taken to avoid tilting.
- To secure stability, the machine must be fixed to a stable ground. This can be done by e.g. bolting the machine to the ground. It must be secured, that the machine is protected towards vibrations, shocks and bumps.
- Mount the SB Station in the intended position using the installation materials supplied. **NOTE!** Ensure that the SB-Station is mounted on flat, level ground. If necessary:
 - Level using shims!
 - Check that the door opens and closes easily!

Have the electrical connection made by a qualified electrician:

- Lay the lead (above 15 m, use lead with 2.5 mm² cross-section) along the bottom of the SB Station. Lay the lead into the terminal box and connect as shown in the circuit diagram.

Fitting the suction hoses:

SB Station and SB Station Marathon:

- Insert the suction hose from the outside through the hose opening (approx. 80 cm, measured from the inner edge of the hose opening to the end of the suction hose). (Fig. 4).

SB Tandem and SB Tandem Marathon:

- First fit the suction hose for cleaner A (Fig. 5).
- Insert the suction hose from the outside through the hose opening. For - Cleaner A approx. 80 cm - Cleaner B approx. 80 cm measured from the inner edge of the hose opening to the end of the suction hose.(Fig. 4).
- Fit the adapter ring (Fig. 1, No. 8) over the connection on the dirt tank. **NOTE!** The connecting elbow opening should point upwards.(Fig. 5).
- Screw adapter fitting (Fig. 6, Item 2) approx. 35 mm onto suction hose (Fig. 6, Item 1). Plug adapter fitting with suction hose into connecting elbow (Fig. 6, Item 3). **NOTE!** Push the suction hose into the housing only far enough that the suction unit can still swing freely when the suction hose is connected. This is important so that the suction unit fits airtight onto the dirt tank when lowered.
- Secure the suction hose with the metal bracket. (Fig. 7).
- Secure the hose bracket to the suction hose approx. 1.30 m from the end of the hose. (Fig. 8).
- Remove screw from clamping piece and detach rope end. Guide the rope through the eye at the hose holder. Hook up rope end to clamping piece and secure with screw. (Fig. 9).
- Screw the crevice nozzle onto the end of the hose (left-hand thread).

Optional accessories:

- **Hose holder** It is also possible to operate the SB Station without the hose retractor. Secure the hose holder to the existing bores with screws. After work, the hose is simply placed into the hose holder. (Fig. 10). Art. No. 43064.
- **CAUTION! Either the hose holder or the hose bracket should be installed as otherwise the suction hose handling is restricted.**

Electronic coin tester:

- Allows the SB Station to be operated with different coins. On request.

Switching on the unit

- Place the dirt tank into the station and lower the suction unit.
- Fit the suction hose with the adapter ring over the connection of the dirt tank.

Open the cover for the coin tester tube:

- Pull the knob and turn through 90° - the cover can now be opened (Fig. 11).
- Pull up the cover until it is horizontal and secure with the flap holder (Fig. 12).
- Set the desired running time per coin at rotary knob 1 of the timer. (Fig. 13): 1 = 1 minute 10 = 10 minutes (Rotary knobs 2-4 are required only with electronic coin tester).

Close the cover for the coin tester tube:

- Push down the cover and turn the knob through 90° - the latching pin engages. It is possible to secure access to the coin box with a padlock (not included in the scope of supply) (Fig. 14).
- Turn the main switch to position 'I'. (Fig. 1, item 9). To check the function, the suction turbine starts briefly. If the turbine does not start, remedy the cause --> See section "Troubleshooting".

The following functions are active when the station is switched on:

SB-Station and SB-Station Marathon:

- Insert a coin.
- The pulse counter counts the number of coins inserted.
- At the end of the preset time, the suction turbine switches off.

- Manual test function: Pressing the button 'Test' (Fig. 13) on the timer pcb switches on the suction turbine briefly.

SB-Tandem and SB-Tandem Marathon:

- Insert a coin.
- The push-buttons on the column start to flash.
- Select the left-hand or right-hand hose by pressing the corresponding button.
- The push-button of the selected side now lights up continuously and the suction turbine starts to run.
- The pulse counter counts the number of coins inserted.
- At the end of the preset time, the suction turbine switches off
- Manual test function: Pressing the button 'Test' (Fig. 13) on the timer pcb switches on the suction turbines briefly.

After using the unit or before leaving it unattended

- Turn the main switch on the inside of the column to position '0'.

Maintenance

- Before repair and maintenance work on the machine can take place, the energy supply to the machine shall be disconnected and locked.
- Weekly / when necessary:

Cleaning and changing the cloth insert filter (Fig. 15)

- Turn the main switch to position „0“.
- Before emptying the dirt tank, hit it gently with the palm of your hand so that dirt drops from the cloth insert filter into the dirt tank.
- Lift the suction unit with the bracket and secure it (Fig. 3).
- Remove suction hose with adapter ring from the connection of the dirt tank.
- Remove the dirt tank.
- Remove the distance basket.
- Remove the cloth insert filter, brush it with a soft brush and check that it is not damaged. **NOTE!** The cloth insert filter can also be cleaned by dipping it in a slightly soapy solution at 30(C. Be careful not to damage the surface of the cloth insert filter and allow it to dry thoroughly after washing it.
- If necessary, replace a damaged cloth insert filter with a new one. Dispose of damaged cloth insert filter according to regulations.
- Insert cloth insert filter in the dirt tank in such a way that the „Do not hit“ label is in front of the suction opening of the dirt tank.
- Insert the distance basket in the cloth insert filter.
- Lower the suction unit. **NOTE!** Ensure that the wire ring of the cloth insert filter is pulled over the edge of the dirt tank and that the dirt tank is fitted air-tight on to the suction unit.

Cleaning the coin tester

- To ensure trouble-free functioning of the coin tester, the coin slot should be cleaned at regular intervals with a cloth soaked in white spirit.

IMPORTANT! Never oil the coin tester!

Spare parts

Cloth insert filter	Art. No. 34106
Suction hose complete	Art. No. 64084
Crevice nozzle	Art. No. 64386

Guarantee

Our general terms and conditions apply to the guarantee and warranty. Changes in line with technical innovation reserved.

Trouble shooting

Fault	Cause	Remedy
Cleaner does not start	<ul style="list-style-type: none"> Fuse or r.c.c.b of the power supply tripped Coin tester soiled or defective Suction turbine, pushbutton or timer defective 	<ul style="list-style-type: none"> Replace fuse or reset r.c.c.b Clean or replace coin tester Call Service
Reduced suction power	<ul style="list-style-type: none"> Suction hose clogged Cloth insert filter soiled Dirt tank full 	<ul style="list-style-type: none"> Clean suction hose See Maintenance Cleaning and changing the cloth insert filter Empty dirt tank
Hose retractor defective	<ul style="list-style-type: none"> Retractor line broken 	<ul style="list-style-type: none"> Call Service

Technical data

		SB-Station SB Station Marathon	SB-Tandem SB Tandem Marathon
Voltage	V/Hz	230/50-60Hz	230/50-60Hz
Power consumption, max.	W	1400 1200 (Marathon)	2800 (Tandem) 2400 (Tandem GB,CH) 2000 (Tandem DK) 2400 (Tandem Marathon)
Fuse	A	16 13 (GB,CH) 10 (DK)	16 13 (GB,CH) 10 (DK)
Volumetric flow (air), max.	l/min.	4000 4200 (Marathon)	2 x 4000 (Tandem) 2 x 3600 (Tandem GB,CH) 2 x 3000 (Tandem DK) 2 x 4200 (Tandem Marathon)
Vacuum, max.	Pa	23500 25000 (Marathon)	23500 25000 (Marathon)
Sound level 1 m from the Station	dB(A)	75	75
Protection class		I	I
Type of protection		IP X4	IP X4
Interference suppression level		N	N
Suction hose - length	m	5	2 x 5
Suction hose -- diameter	mm	50	50
Tank volume	l	30	2 x 30
Depth	m	0.83	1.19
Width	m	0.55	0.55
Height	m	2.04	2.04
Weight, complete	kg	90	115
Vibration ISO 5349 a _n	m/s ²	≤ 2,5	

Working enviroment

Ambient temperature	°C	-10 - 40
Humidity	%	max 80
Altitude	m	max 1500



HEAD QUARTER

DENMARK

Nilfisk A/S
Kornmarksvej 1
DK-2605 Brøndby
Tel.: (+45) 4323 8100
www.nilfisk.com

SALES COMPANIES

ARGENTINA

Nilfisk Argentina
Herrera 1855 Piso 4° B Ofic 405
Ciudad de Buenos Aires
Tel.: (+54) 11 6091 1576
www.nilfisk.com.ar

AUSTRALIA

Nilfisk Pty Ltd
Unit 1/13 Bessemer Street
Blacktown NSW 2148
Tel.: (+61) 2 98348100
www.nilfisk.com.au

AUSTRIA

Nilfisk GmbH
Metzgerstrasse 68
5101 Bergheim bei Salzburg
Tel.: (+43) 662 456 400 90
www.nilfisk.at

BELGIUM

Nilfisk n.v.-s.a.
Riverside Business Park
Boulevard Internationaalelaan 55
Bâtiment C3/C4 Gebouw
Bruxelles 1070
Tel.: (+32) 24 67 60 50
www.nilfisk.be

BRAZIL

Nilfisk do Brasil
Av. Eng. Luis Carlos Berrini, 550
40 Andar, Sala 03
SP - 04571-000 Sao Paulo
Tel.: (+11) 3959-0300 / 3945-4744
www.nilfisk.com.br

CANADA

Nilfisk Canada Company
240 Superior Boulevard
Mississauga, Ontario L5T 2L2
Tel.: (+1) 800-668-8400
www.nilfisk.ca

CHILE

Nilfisk S.A. (Comercial KCS Ltda)
Salar de Lamara 822
8320000 Santiago
Tel.: (+56) 2684 5000
www.nilfisk.cl

CHINA

Nilfisk
4189 Yindu Road
Xinzhuang Industrial Park
201108 Shanghai
Tel.: (+86) 21 3323 2000
www.nilfisk.cn

CZECH REPUBLIC

Nilfisk s.r.o.
VGP Park Horní Počernice
Do Čertous 1/2658
193 00 Praha 9
Tel.: (+420) 244 090 912
www.nilfisk.cz

DENMARK

Nilfisk Danmark A/S
Industrivej 1
Hadsund, DK-9560
Tel.: 72 18 21 20
www.nilfisk.dk

FINLAND

Nilfisk Oy Ab
Koskelontie 23 E
02920 Espoo
Tel.: (+358) 207 890 600
www.nilfisk.fi

FRANCE

Nilfisk SAS
26 Avenue de la Baltique
Villebon sur Yvette
91978 Courtabouef Cedex
Tel.: (+33) 169 59 87 00
www.nilfisk.fr

GERMANY

Nilfisk GmbH
Guido-Oberdorfer-Straße 2-10
89287 Bellenberg
Tel.: (+49) (0)7306/72-444
www.nilfisk.de

GREECE

Nilfisk A.E.
Αναπαύσεως 29
Κορωπί T.K. 194 00
Tel.: (30) 210 9119 600
www.nilfisk.gr

HOLLAND

Nilfisk B.V.
Versterkerstraat 5
1322 AN Almere
Tel.: (+31) 036 5460760
www.nilfisk.nl

HONG KONG

Nilfisk Ltd.
2001 HK Worsted Mills
Industrial Building
31-39, Wo Tong Tsui St.
Kwai Chung, N.T.
Tel.: (+852) 2427 5951
www.nilfisk.com

HUNGARY

Nilfisk Kft.
II. Rákóczi Ferenc út 10
2310 Szigetszentmiklós-Lakihegy
Tel.: (+36) 24 475 550
www.nilfisk.hu

INDIA

Nilfisk India Limited
Pramukh Plaza, 'B' Wing, 4th floor, Unit
No. 403
Cardinal Gracious Road, Chakala
Andheri (East) Mumbai 400 099
Tel.: (+91) 22 6118 8188
www.nilfisk.in

IRELAND

Nilfisk
1 Stokes Place
St. Stephen's Green
Dublin 2
Tel.: (+35) 3 12 94 38 38
www.nilfisk.ie

ITALY

Nilfisk SpA
Strada Comunale della Braglia, 18
26862 Guardamiglio (LO)
Tel.: (+39) (0) 377 414021
www.nilfisk.it

JAPAN

Nilfisk Inc.
1-6-6 Kita-shinyokohama, Kouhoku-ku
Yokohama, 223-0059
Tel.: (+81) 45548 2571
www.nilfisk.com

MALAYSIA

Nilfisk Sdn Bhd
Sd 33, Jalan KIP 10
Taman Perindustrian KIP
Sri Damansara
52200 Kuala Lumpur
Tel.: (60) 3603 627 43 120
www.nilfisk.com

MEXICO

Nilfisk de Mexico, S. de R.L. de C.V.
Pirineos #515 Int.
60-70 Microparque
Industrial WSantiago
76120 Queretaro
Tel.: (+52) (442) 427 77 00
www.nilfisk.com

NEW ZEALAND

Nilfisk Limited
Suite F, Building E
42 Tawa Drive
0632 Albany Auckland
Tel.: (+64) 9 414 1996
Website: www.nilfisk.com

NORWAY

Nilfisk AS
Bjørnerudveien 24
1266 Oslo
Tel.: (+47) 22 75 17 80
www.nilfisk.no

PERU

Nilfisk S.A.C.
Calle Boulevard 162, Of. 703, Lima 33-
Perú
Lima
Tel.: (511) 435-6840
www.nilfisk.com

POLAND

Nilfisk Sp. Z.O.O.
Millenium Logistic Park
ul. 3 Maja 8, Bud. B4
05-800 Pruszków
Tel.: (+48) 22 738 3750
www.nilfisk.pl

PORTUGAL

Nilfisk Lda.
Sintra Business Park
Zona Industrial Da Abrunheira
Edificio 1, 1° A
P2710-089 Sintra
Tel.: (+351) 21 911 2670
www.nilfisk.pt

RUSSIA

Nilfisk LLC
Vyatskaya str. 27, bld. 7/1st
127015 Moscow
Tel.: (+7) 495 783 9602
www.nilfisk.ru

SINGAPORE

Den-Sin
22 Tuas Avenue 2
639453 Singapore
Tel.: (+65) 6268 1006
www.densin.com

SLOVAKIA

Nilfisk s.r.o.
Bancíkovej 1/A
SK-821 03 Bratislava
Tel.: (+421) 910 222 928
www.nilfisk.sk

SOUTH AFRICA

Nilfisk (Pty) Ltd
Kimbult Office Park
9 Zeiss Road
Laser Park
Honeydew
Johannesburg
Tel: +27118014600
www.nilfisk.co.za

SOUTH KOREA

Nilfisk Korea
#204 2F Seoulsup Kolon Digital Tower
25 Seongsuil-ro 4-gil, Seongdong-gu
Seoul.
Tel.: (+ 82) 2 3474 4141
www.nilfisk.co.kr

SPAIN

Nilfisk S.A.
Torre d'Ara,
Passeig del Rengle, 5 Plta. 10ª
08302 Mataró
Tel.: (34) 93 741 2400
www.nilfisk.es

SWEDEN

Nilfisk AB
Taljegårdsgatan 4
431 53 Mölndal
Tel.: (+46) 31 706 73 00
www.nilfisk.se

SWITZERLAND

Nilfisk AG
Ringstrasse 19
Kircheberg/Industri Stelz
9500 Wil
Tel.: (+41) 71 92 38 444
www.nilfisk.ch

TAIWAN

Nilfisk Ltd
Taiwan Branch (H.K)
No. 5, Wan Fang Road
Taipei
Tel.: (+88) 6227 00 22 68
www.nilfisk.tw

THAILAND

Nilfisk Co. Ltd.
89 Soi Chokechai-Ruammitr
Viphavadee-Rangsit Road
Ladyao, Jatuchak, Bangkok 10900
Tel.: (+66) 2275 5630
www.nilfisk.co.th

TURKEY

Nilfisk A.S.
Serifali Mh. Bayraktar Bulv. Sehit Sk. No:7
Ümraniye, 34775 Istanbul
Tel.: +90 216 466 94 94
www.nilfisk.com.tr

UNITED ARAB EMIRATES

Nilfisk Middle East Branch
SAIF-Zone
P.O. Box 122298
Sharjah
Tel.: (+971) (0) 655-78813
www.nilfisk.com

UNITED KINGDOM

Nilfisk Ltd.
Nilfisk House, Bowerbank Way
Gilwilly Industrial Estate, Penrith
Cumbria CA11 9BQ
Tel.: (+44) (0) 1768 868995
www.nilfisk.co.uk

UNITED STATES

Nilfisk, Inc.
9435 Winnetka Ave N,
Brooklyn Park
MN- 55445
www.nilfisk.com

VIETNAM

Nilfisk Vietnam
No. 51 Doc Ngu Str.
P. Vinh Phuc, Q.Ba Dinh
Hanoi
Tel.: (+84) 761 5642
www.nilfisk.com